

# STIGMODERA (CASTIARINA) (COLEOPTERA: BUPRESTIDAE): TAXONOMY, NEW SPECIES AND A CHECKLIST

by S. BARKER\*

## Summary

BARKER, S. (1986) *Stigmodera (Castiarina)* Coleoptera: Buprestidae: (taxonomy, new species and a checklist. *Trans. R. Soc. S. Aust.* 110(1), 1-36, 30 May, 1986.

Twenty-two species are resurrected from synonymy. *S. acuta* Deuquet, *S. alternazona* Thomson, *S. bicolor* C & G, *S. bimaculata* Saunders, *S. colligans* Kerremans, *S. danesi* Oberberger, *S. desideria* Carter, *S. deyrollei* Thomson, *S. eborica* Carter, *S. garrawillae* Carter, *S. haroldi* Saunders, *S. humeralis* Kerremans, *S. julia* Thomson, *S. montigena* Oke, *S. ochreiventris* Saunders, *S. placens* Kerremans, *S. puella* Saunders, *S. puerilis* Kerremans, *S. puteolata* Carter, *S. terraereginae* Blackburn, *S. trimaculata* Saunders, *S. tyrrhena* Blackburn. Two sub-species (*S. picta malleeana* Carter and *S. grata discoflava* Carter) are raised to specific rank. Eighteen new synonyms of *Stigmodera (Castiarina)* are recognised (valid name is given last): *timida* Kerremans = *australasiae* C & G; *aliceae* Barker = *bicolor* C & G; *kalbarri* Barker = *bucolica* Kerremans; *goldingi* Barker = *dunesi* Oberberger; *chobauti* Théry = *sancta* Carter = *deyrollei* Thomson; *clarki* Carter = *eremita* Blackburn; *yilgarni* Oberberger = *flaviceps* Carter; *fairmairei* Kerremans = *hoffmanseggii* Hope; *electa* Kerremans = *inconspicua* Saunders; *blackburni* Carter = *julia* Thomson; *dawsonensis* Carter = *lilliputiana* Thomson; *alpestris* Barker = *montigena* Oke; *cara* Blackburn = *ochreiventris* Saunders; *auripennis* Barker = *pallas* Blackburn; *urolimbata* Carter = *puella* Saunders; *transversepicta* Thomson = *scalaris* (Boisduval); *cordifer* Kerremans = *thomsoni* Saunders.

Twenty-five new species of *Stigmodera (Castiarina)* are described: *S. athertonensis* sp. nov., *S. blackdownensis* sp. nov., *S. browningi* sp. nov., *S. burnsi* sp. nov., *S. capensis* sp. nov., *S. coolsi* sp. nov., *S. cruentata* sp. nov., *S. dessarti* sp. nov., *S. discolorata* sp. nov., *S. eyrensis* sp. nov., *S. fusca* sp. nov., *S. hilleri* sp. nov., *S. incognita* sp. nov., *S. kempsteri* sp. nov., *S. lukini* sp. nov., *S. melrosensis* sp. nov., *S. pearsoni* sp. nov., *S. pulla* sp. nov., *S. rufa* sp. nov., *S. stellata* sp. nov., *S. lasmaniensis* sp. nov., *S. turbulenta* sp. nov., *S. uncata* sp. nov., *S. viridolinea* sp. nov., *S. warningensis* sp. nov.

A checklist of the three hundred and seventy-five species in the sub-genus *Castiarina* is given with species distribution indicated by state or country.

KEY WORDS: Coleoptera, Buprestidae, *Stigmodera (Castiarina)*, synonyms, new species, checklist.

## Introduction

The taxonomy of the buprestid sub-genus *Stigmodera (Castiarina)* Castlenau & Gory has been in a state of flux over recent years. Barker (1979, 1980, 1983) has described fifty-five new species and synonymised many others. Examination of freshly collected specimens and of specimens deposited in a number of museums has indicated the existence of many more undescribed species and cast doubt upon the validity of others. Twenty-five new species of *Stigmodera (Castiarina)* are described here, the status of a further forty-two species and two sub-species reassessed and a checklist of the species recognised within the sub-genus with their distribution provided.

## Materials and Methods

The abbreviations used in the text for museum and private collections are as follows (Watt 1979): AHQA Mr A. Hiller, Mt Glorious, Qld; AMSA Australian Museum, Sydney; ANIC Australian

National Insect Collection, CSIRO, Canberra; ASSA Mr A. Sundholm, Sydney, N.S.W.; AWHQ Mr A. Walford-Huggins, Mt Molloy, Qld; BMNH British Museum (Natural History), London; DPIQ Department of Primary Industries, Mareeba, Qld; EAQA Mr E. E. Adams, Edungalba, Qld; GBVA Mr G. Burns, Mornington, Vic; HMOE Hope Museum, Oxford, England; JGAA Mrs J. Gardner, Adelaide, S. Aust.; MNHN Muséum National d'Histoire Naturelles, Paris; MPWA Mr M. Powell, Mr M. Golding and Mr T. M. S. Hanlon, Attadale, W.A.; NMPC National Museum, Prague, Czechoslovakia; NMVA National Museums of Victoria; QMBA Queensland Museum, Brisbane; RMBB L'Institut Royal des Sciences Naturelles de Belgique, Brussels; RWSO Mr R. Westcott, Salem, Oregon; SAMA South Australian Museum, Adelaide; WAMA Western Australian Museum, Perth; WADA Western Australian Department of Agriculture, South Perth.

Members of species groups referred to in the text are indicated in the checklist by a lower case letter in parenthesis. They are: [a] *S. flavopieta* (Boisduval), [b] *S. hilaris* Hope, [c] *S. sexguttata* Macleay, [d] *S. vicina* Saunders, [e] *S. cruentata*

\* Department of Zoology, University of Adelaide, Box 498, G.P.O., Adelaide, S. Aust. 5001.

{Kirby), [f] *S. biguttata* Macleay, [h] *S. klugi* C & G, [i] *S. delectabilis* Hope, [j] *S. straminea* Macleay, [k] *S. gibbicollis* Saunders, [l] *S. fulviventris* Macleay, [m] *S. convexa* Carter, [n] *S. distinguenda* Saunders, [o] *S. producta* Saunders mimicry group, [p] *S. decemmaculata* (Kirby), [q] *S. scalaris* (Boisduval), [r] *S. simulata* C & G, [s] *S. octospilota* C & G, [t] *S. octomaculata* Saunders, [u] *S. atricollis* Saunders, [v] *S. sexplagiata* Gory, [w] *S. trifasciata* C & G. A complete list of species groups and a key eventually will be published as part of a revision of *Stigmodera* (*Castiarina*) in preparation.

#### *Species resurrected from synonymy*

Barker (1983) synonymised *S. danesi* Oberberger (holotype male, Qld, NMPC 23415) with *S. castelnaudi* Saunders (holotype female, Adelaide, BMNH). In *S. danesi* the background colour of the elytra and sides of the pronotum is orange while in *S. castelnaudi* it is red. External morphology and male genitalia are different and indicate that they both are valid belonging in two different species groups. *S. danesi* occurs in W.A. and S. Aust. and is figured under the description of its synonym *S. goldingi* Barker (holotype male, Coolgardie, WAMA) (Barker 1983, Figs. 2E, 3D).

I have re-examined the holotypes of *S. puerilis* Kerremans (holotype female, Aust., BMNH) and *S. timida* Kerremans (holotype male, Adelaide, BMNH) and find that *S. puerilis* is a valid species and *S. timida* is a synonym of *S. australasiae* C & G (holotype female, Aust., MNHN). Barker (1983) confused these two species, synonymised *S. puerilis* with *S. australasiae* and figured *S. puerilis* mistakenly calling it *S. timida*.

Barker (1979) followed Carter (1916, 1929, 1931) in synonymising *S. bicolor* C & G (holotype, Kangaroo Is., MNHN) with *S. flavopicta* (Boisduval) (holotype not located). *S. bicolor* is a member of the *S. cruentata* (Kirby) (holotype, Aust., BMNH) species group and is a smaller species than *S. flavopicta*. Male genitalia are very distinct and place *S. flavopicta* in its own species group (Barker 1980, Fig. 3E; Barker 1983, Fig. IV). *S. bicolor* occurs in the Mt Lofty Ranges and on Kangaroo Is., S. Aust. and is figured under the description of *S. aliciae* Barker (holotype male, Mt Lofty, SAMA) its synonym (Barker 1980, Fig. 2E).

Carter (1931) considered *S. puella* Kerremans (holotype, Aust., BMNH) to be a synonym of *S. sexguttata* Macleay (holotype female, Port Denison, ANIC) and Barker (1979) followed. *S. puella* is a member of the *S. sexguttata* species group, but because of differences in external morphology and male genitalia (Figs 1E, 1B), I consider it a valid

species. *S. auralimbata* Carter (holotype male, Cairns, Qld, NMVA) is its synonym.

Barker (1980) synonymised *S. colligens* Kerremans (holotype female, Qld, BMNH) with *S. carminea* Saunders (holotype, N.S.W., BMNH). *S. colligens* has very pale yellow elytra with dark fascia and occurs near Coonabarabran, N.S.W. and in southern Qld. It is larger than *S. carminea* which has red elytra and occurs in N.S.W., Vic., S. Aust. and W.A. Although male genitalia are quite similar, as in other members of the *S. vicina* Saunders species group (Barker 1983, Figs. 3K, 3L), the differences in colour, elytral pattern and distribution justify separation and I consider both to be valid species.

Barker (1979) synonymised *S. desideria* Carter (two female syntypes, Cue, W.A., NMVA) with *S. longicollis* Saunders (holotype female, north-western Australia, BMNH). I have re-examined a series of both forms. *S. desideria* has heavier markings than *S. longicollis*, is larger, flatter, occurs further east in W.A. than *S. longicollis* and male genitalia differ (Figs 1G, 1H). I consider *S. desideria* a valid species.

Carter (1931) listed *S. haroldi* Saunders (replacement name for *S. viridiventris* Saunders homonym) (holotype female, BMNH) as a synonym of *S. vegeta* Hope (holotype male, HMOE 974) but inexplicably listed *S. cruentata* (Kirby) as a synonym of *S. vegeta* despite the fact that *S. cruentata* has date priority. Barker (1979) listed *S. vegeta* and *S. haroldi* as synonyms of *S. cruentata*. *S. cruentata* has a blue body and red elytra with the following blue markings: very broad pre-medial fascia; post-medial fascia; apical mark. *S. haroldi* has a green head, pronotum and underside and yellow elytra with the following dark markings: pre-medial fascia not reaching the margin, projecting anteriorly from the end; post-medial fascia reaching margin; an apical mark (Fig. 4A). Its distribution is uncertain as the two specimens available in the BMNH collection are labelled, N.S.W. and Nov Hollandiae, occidentalis, respectively. It is larger than *S. vegeta* which has blue-green head, pronotum and undersurface and red elytra with the following dark markings: pre-apical fascia extending from the posterior edge to reach margin; post-medial fascia reaching margin; an apical mark. All are valid species belonging in the *S. cruentata* (Kirby) species group. *S. haroldi* is the largest member.

Barker (1979) followed Carter (1940) who synonymised *S. montigena* Oke (holotype female, Warburton Ranges, Vic. NMVA) with *S. flavo-purpurea* Carter (holotype female, Medlow, N.S.W., NMVA). *S. montigena* is a valid species and a member of the *S. cruentata* (Kirby) species group. It is figured under its synonym *S. alpestris* Barker

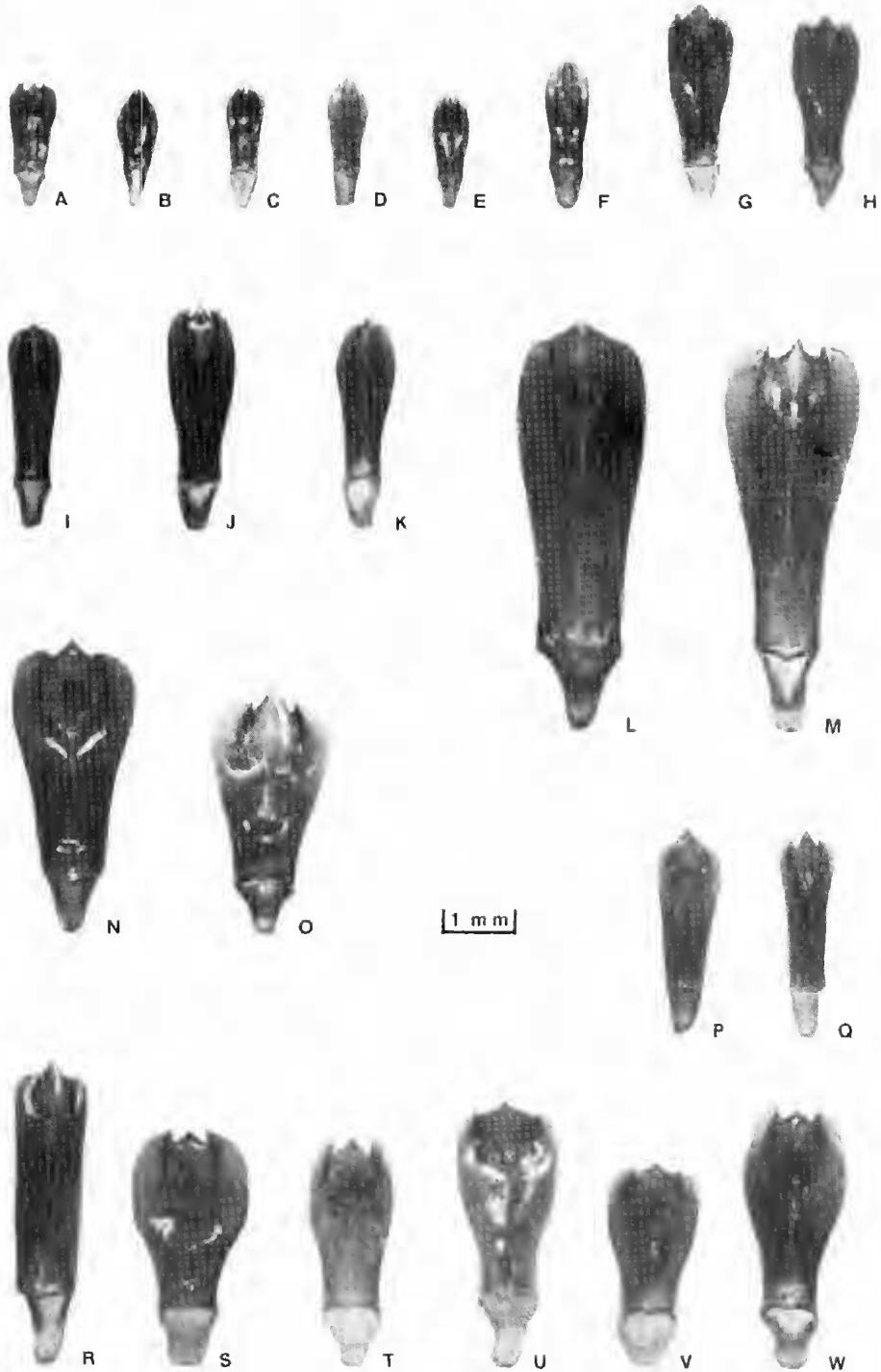


Fig. 1. Photomicrographs of male genitalia of the following *Stigmodera (Castiarina)* species: A. *S. hilaris* Hope, B. *S. puella* Saunders, C. *S. melrosensis* sp. nov., D. *S. capensis* sp. nov., E. *S. sexguttata* Macleay, F. *S. goodingi* Barker, G. *S. desideria* Carter, H. *S. longicollis* Saunders, I. *S. trimaculata* Saunders, J. *S. terraereginae* Blackburn, K. *S. biguttata* Macleay, L. *S. alternazona* Thomson, M. *S. deyrollei* Thomson, N. *S. cupricollis* Saunders, O. *S. hoffmanseggi* Hope, P. *S. eborica* Carter, Q. *S. moribunda* Saunders, R. *S. punctiventris* Saunders, S. *S. bimaculata* Saunders, T. *S. viridolinea* sp. nov., U. *S. subincta* Carter, V. *S. ignea* Blackburn, W. *S. burnsi* sp. nov.

(holotype male, Upper Tumut Gorge, N.S.W., QMBA) (Barker 1983, Figs. 1W, 6D), and is a widely distributed species in Vic. and N.S.W. *S. flavo-purpurea* belongs in its own species group.

Barker (1979) synonymised *S. trimaculata* Saunders (holotype female, north-west Aust., BMNH) and *S. terraereginae* Blackburn (holotype female, Endeavour River, NMVA) (Fig. 4I) with *S. biguttata* Macleay (holotype female, Port Denison, ANIC). I have examined fresh specimens and male genitalia (Figs 1I, 1J, 1K) and find that all are valid species. *S. terraereginae* and *S. biguttata* occur in northern Qld and *S. trimaculata* in N.T. and north-west W.A. They belong in the *S. biguttata* species group.

Carter (1916, 1929, 1931) synonymised *S. alternazona* Thomson, *S. deyrollei* Thomson and *S. julia* Thomson with *S. cupricollis* Saunders. Barker (1979) agreed and also placed *S. chobauti* Théry, *S. fairmairei* Kerremans and *S. sancta* Carter as synonyms of *S. cupricollis*. After re-examining the types and male genitalia (Figs 1L, 1M, 1N, 1O) I find that there are five valid species. *S. cupricollis* Saunders (holotype female, Aust., BMNH) occurs in Qld. The head, pronotum and undersurface are coppery-bronze, the elytra yellow with two fascia and an apical mark (Fig. 4H). *S. alternazona* Thomson (holotype male, Aust., MNHN) is a larger species found in the Mt Lofty Ranges, S. Aust. Ten specimens have been located in the MNHN, BMNH and SAMA. The head and pronotum are dull green, the undersurface bright green and the elytra red with two fascia and an apical mark (Fig. 4G). In *S. deyrollei* Thomson (holotype female, Aust., MNHN) the head and pronotum are green or golden green, the undersurface green and the elytra yellow with two fascia and an apical mark. It occurs in southern Qld, N.S.W. and Vic (Fig. 4J). *S. chobauti* Théry (holotype, Mt Victoria, MNHN) is its senior synonym and *S. sancta* Carter (holotype male, Beechworth, Vic., NMVA) its junior synonym. The latter form has the pre-medial fascia on the elytra missing. The male genitalia do not differ from the typical form of *S. deyrollei*. *S. julia* is known only from three female specimens: the type in MNHN; a single specimen in the BMNH from Port Lincoln, S. Aust., from the Blackburn collection; the female holotype of *S. blackburni* Carter, S. Aust., SAMA. The head and body are nondescript dark, the elytra in live specimens are probably pale

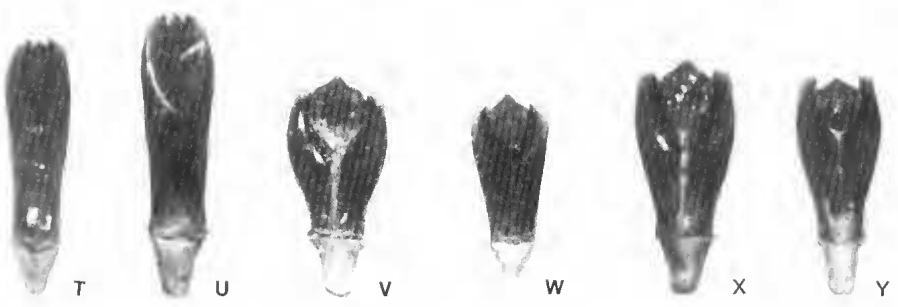
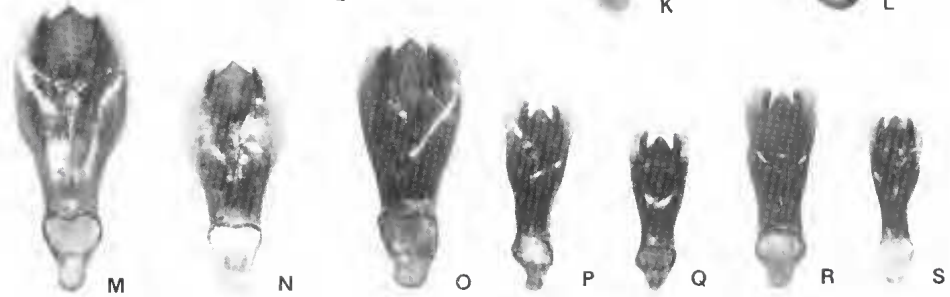
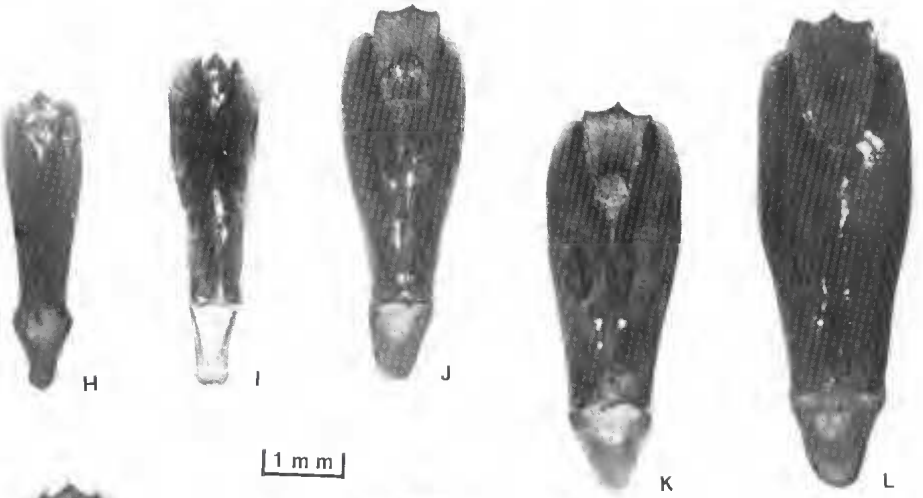
yellow with a red margin, there are two pre-medial spots, a post-medial fascia and an apical mark (Fig. 4E). *S. blackburni* Carter is its synonym. These all belong in the *S. cupricollis* species group. *S. hoffmanseggi* Hope (syntype male, W.A. (sic), HMOE 1011 2/2) occurs in eastern and southern Australia (not in W.A.). Male genitalia are distinctive (Fig. 1O) and place it in the *S. klugi* C & G species group. *S. fairmairei* Kerremans (holotype male, Aust., BMNH) is its synonym.

Barker (1979) listed *S. eborica* Carter (holotype, Ebor, N.S.W., NMVA) as a synonym of *S. moribunda* Saunders (holotype male, Aust., BMNH). *S. eborica* is found in the Armidale district N.S.W. The head pronotum and undersurface are bright green. The elytra are pale yellow and have the following black markings: a spot over each humeral callus; narrow pre-apical fascia; a narrow apical mark (Fig. 4C). The head, pronotum and undersurface of *S. moribunda* are dull green, the elytra are pale yellow and have the following black markings: a pre-medial fascia; a post-medial fascia; a mark covering the whole apical area (Fig. 4D). Specimens with the heaviest pattern occur in coastal areas in N.S.W. There is a cline with loss of pattern in specimens from further inland in N.S.W. *S. rotundata* Saunders (female holotype, S. Aust. (sic), BMNH) is its synonym. Male genitalia are different from those of *S. eborica* (Figs 1P, 1Q). I consider *S. eborica* to be a valid species.

Carter (1929, 1931) listed *S. tyrrenna* Blackburn (holotype male, Qld, BMNH) as a synonym of *S. septemguttata* Waterhouse (holotype female, Qld, BMNH). This synonymy was followed by Barker (1979). *S. tyrrenna* has a green head and body, the elytra are yellow with a red margin and the following black markings: two pre-medial spots and an anterior sutural mark; a post-medial fascia; an apical mark (Fig. 7G). Specimens attributable to *S. septemguttata* in the SAMA are broader and have a green head and body, yellow elytra with a red margin and the following black markings: two pre-medial spots and an anterior sutural mark; two post-medial spots; narrow pre-apical mark. Their male genitalia are different (Figs 3P, 3Q). I consider *S. tyrrenna* a valid species. Both belong in the *S. detectabilis* Hope (holotype female, Port Phillip, HMOE 996) species group (Fig. 7E).

Carter (1916, 1929) listed *S. bimaculata* Saunders (holotype female, north-west Aust., BMNH) as a

Fig. 2. Photomicrographs of male genitalia of the following *Stigmodera* (*Castiarina*) species: A. *S. humeralis* Kerremans, B. *S. victoriensis* Blackburn, C. *S. gibbicollis* Saunders, D. *S. eremita* Blackburn, E. *S. rufa* sp. nov., F. *S. eyrensis* sp. nov., G. *S. stellata* sp. nov., H. *S. incognita* sp. nov., I. *S. rufolimbata* Carter, J. *S. fulviventris* Macleay, K. *S. atheriopsis* sp. nov., L. *S. jekelli* Saunders, M. *S. ochreiventris* Saunders, N. *S. straminea* Macleay, O. *S. placent* Kerremans, P. *S. discoflava* Carter, Q. *S. blackdownensis* sp. nov., R. *S. subgrata* Blackburn, S. *S. garrawillae* Carter, T. *S. uncaia* sp. nov., U. *S. simulata* C & G, V. *S. convexa* Carter, W. *S. puteolata* Carter, X. *S. turneri* Barker, Y. *S. kempsteri* sp. nov.



valid species and *S. punctiventris* Saunders, *S. guttata* Blackburn, var. *minor* Blackburn and *S. ignea* Blackburn as its synonyms. Carter (1931) later recognised four as valid species, *S. bimaculata* occurs in north-west W.A. and Qld but is rare in collections. The edges of the pronotum are flattened and the texture of the centre marbled with glabrous areas (Fig. 5A). It is a larger species than *S. straminea* Macleay (holotype, Port Denison, ANIC) and was incorrectly synonymised with that species by Barker (1979). *S. punctiventris* Saunders (holotype female, Cawler, BMNH) has dark blue head, pronotum and undersurface. The elytra are red with two dark blue fascia and an apical mark. It occurs in the Norseman and Eucla districts of W.A. and in the Big and Little Deserts, Vic. and in N.S.W. *S. pisciformis* Carter (syntypes male and female, ANIC) is its synonym.

*S. guttata* is represented by two female specimens in the BMNH. The holotype labelled "Lyndoch, S. Aust." and the other "Adel." I have not located any other specimens. It is a typical mallee species with pale yellow elytra and the rest of the body bright green (Fig. 5D). Blackburn (1890) originally described what he thought might be a variety and he commenced the description with the following: "Var. (?) Minor." The latin word minor is unitalicised and is not a name, no name is given in the paper. Carter (1929) listed *minor* Blackburn as a variety name thus creating a nomen nudum. It is likely that the species Blackburn described as an unnamed variety of *S. guttata* has been mistakenly identified as *S. guttata*, a species not represented in any Australian collection that I have seen. It is described herein as *S. viridolinea* Barker sp. nov. (Figs 1T, 5E). *S. ignea* Blackburn (holotype, S. Aust., BMNH) is a valid species found in W.A., S. Aust. and Vic. Available male genitalia are figured (Figs 1R, 1S, 1T, 1V, 2N).

Barker (1979) listed *S. humeralis* Kerremans (holotype, N.S.W., BMNH) as a synonym of *S. victoriensis* Blackburn (holotype female, Ballarat, BMNH). The two belong in the *S. gibbicollis* Saunders (holotype male, Adelaide, BMNH) species group. *S. victoriensis* has three fascia on the elytra and occurs in Vic. and southern N.S.W. (Fig. 6H); *S. sensitiva* Kerremans (holotype, Aust., BMNH) is its synonym. *S. humeralis* has a lighter elytral pattern and occurs in northern N.S.W. and southern Qld (Fig. 6G). Male genitalia differ (Figs 2A, 2B, 2C). I consider *S. humeralis* Kerremans to be a valid species; *S. lillyardi* Carter (syntypes, N.S.W., NMVA) is its synonym.

Barker (1979) followed Carter (1931, 1940) who incorrectly synonymised *S. ochreiventris* Saunders (holotype male, Aust., BMNH) (Figs 5C, 2M) with *S. fulviventris* Macleay (holotype, Port Denison,

ANIC) (Figs 2J, 7C). The latter species forms a natural group with *S. jekelli* Saunders (holotype female, Adelaide, BMNH), *S. pallas* Blackburn (holotype male, Thurs. Is.) and *S. uthertonensis* Barker sp. nov. (Figs 2K, 7B). *S. guttigera* Blackburn (syntype male, Vic., NMVA) and *S. mackayana* Carter (holotype male, Mackay, SAMA) are its synonyms. *S. ochreiventris* belongs in the *S. straminea* Macleay (holotype, Port Denison, ANIC) species group, together with *S. placens* Kerremans (holotype male, Aust., BMNH). Their male genitalia are illustrated (Figs 2M, 2N, 2O). *S. straminea* occurs in central and northern Qld and has ivory elytra with either a post-medial spot on each elytron and a small apical mark or no elytral markings. *S. addenda* Kerremans (holotype Aust., BMNH) and *S. johannae* Théry (holotype male, Townsville, Qld, MNHN) are its synonyms. *S. placens* has a dark head and pronotum and pale yellow elytra with two broad black fascia reaching the margin and a black apical mark (Fig. 5B). It occurs in central coastal N.S.W. *S. ochreiventris* is a variably marked species. The head and pronotum are shining coppery and the elytra pale yellow with black markings varying from two fascia and an apical mark to four spots on the elytra and a remnant apical mark (Fig. 5C). It occurs in the Stanthorpe district, Qld and northern N.S.W. *S. cara* Blackburn (holotype male, Darling Downs, Qld, NMVA) is its synonym.

Barker (1979) synonymised *S. puteolata* Carter (holotype male, Lake Ningham, W.A., ANIC) with *S. convexa* Carter (syntypes, Kalgoorlie, W.A., NMVA). I have re-examined a series of specimens in the SAMA collection and male genitalia (Figs 2V, 2W) and find that they represent two species. Barker (1983, Fig. 3W) wrongly illustrated the genitalia of *S. puteolata* as *S. convexa*. *S. convexa* has a closely punctured pronotum and is found at Southern Cross and Kalgoorlie, W.A. *S. puteolata* has very coarsely punctured pronotum and occurs further north and inland in W.A. and at Qoldea, S. Aust.

Barker (1983) synonymised *S. garrwillae* Carter (holotype male, Mullaley, N.S.W., not located) with *S. subgrata* Blackburn (replacement name for *S. campestris* Kerremans, homonym) (holotype, Aust., BMNH). The female allotype (Mullaley, N.S.W., ANIC) has broken tips to the elytral apices so that it has not been possible to confirm the presence of spineless apices (Carter, 1931). I have now examined topotype male and female specimens and agree that the apices are spineless. *S. subgrata* has bispinose elytral apices and occurs in Sydney and the Blue Mts. Because of colour and pattern differences, a different distribution and differences in male genitalia (Figs 2R, 2S) I consider *S. garrwillae* to

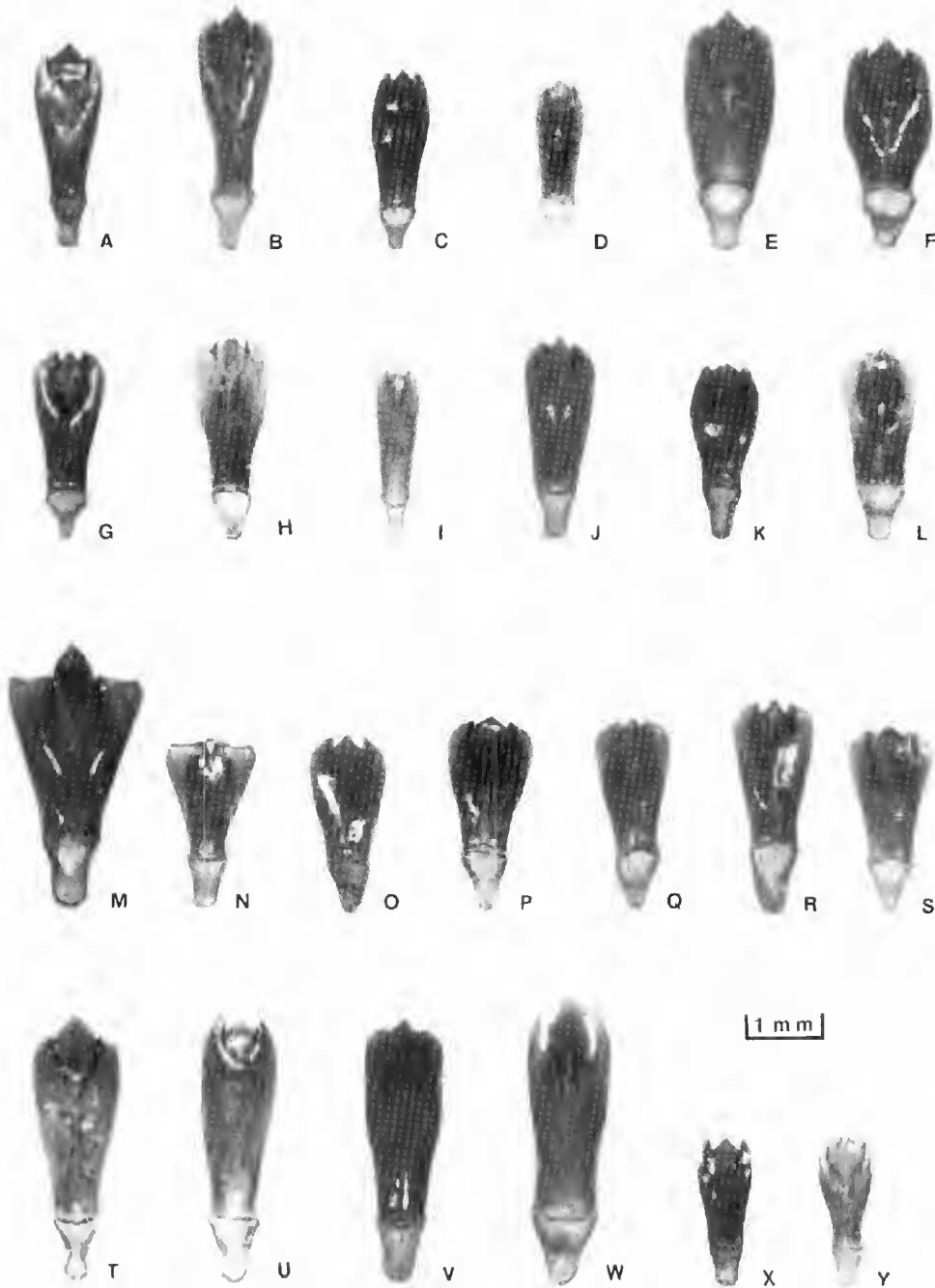


Fig. 3. Photomicrographs of male genitalia of the following *Stigmodera* (*Castiarina*) species: A. *S. malleana* Carter, B. *S. decemmaculata* (Kirby), C. *S. browningi* sp. nov., D. *S. pallidiventris* C & G, E. *S. tasmaniensis* sp. nov., F. *S. octospilota* C & G, G. *S. pearsoni* sp. nov., H. *S. octomaculata* Saunders, I. *S. cracenta* sp. nov., J. *S. atricollis* Saunders, K. *S. hilleri* sp. nov., L. *S. fusca* sp. nov., M. *S. warningensis* sp. nov., N. *S. turbulenta* sp. nov., O. *S. dessarti* sp. nov., P. *S. septemguttata* Waterhouse, Q. *S. tyrrhena* Blackburn, R. *S. delectabilis* Hope, S. *S. pulla* sp. nov., T. *S. lukinii* sp. nov., U. *S. trifasciata* C & G, V. *S. coolsi* sp. nov., W. *S. browni* Carter, X. *S. discolorata* sp. nov., Y. *S. cruentata* (Kirby).

be a valid species. It belongs in the *S. distinguenda* Saunders species group.

The identity of four members of the *S. producta* Saunders (holotype female, BMNH) mimicry group is confused. Barker (1979) synonymised *S. acuta* Deuquet (holotype male, Acacia Plateau, N.S.W., AMSA) with *S. delicatula* Kerremans (holotype female, N.S.W., BMNH). Both of these are valid species and are the most often seen in collections. A third species was described as *S. pseudasilida* by Barker (1983, Fig. 6H). One of the paratypes designated was the female paratype of *S. acuta* Deuquet held in the RMBB collection. The illustration given by Deuquet (1956, Fig. 1) as *S. acuta* was actually of this specimen, and the type of *S. acuta*, a separate species, was not illustrated. Barker (1983, Fig. 4A) figured *S. acuta* and wrongly called it *S. delicatula*. *S. spectabilis* Kerremans appears to be represented in collections by only three specimens: the holotype female, N.S.W., BMNH; two females collected by Mr A. Hiller at Mt Glorious, Qld.

#### *Sub-species elevated to specific rank*

*S. picta mallecana* Carter 1929 (Fig. 5K) occurs in mallee areas in Vic. and S. Aust. *S. p. picta* C & G is a smaller species which occurs on the coastal plains in W.A. It has dark purple-blue head and pronotum; in *S. mallecana* they are bright blue. Both species belong in the *S. decemmaculata* (Kirby) species group, and although *S. mallecana* is close to *S. decemmaculata* male genitalia are different (Figs 3A, 3B). I consider *S. mallecana* to be a valid species. I have not been able to locate types.

*S. subgrata discoflava* Carter 1930 occurs in the Stanthorpe district, Qld, and the basal colour of the elytra is red with brassy-green markings (Fig. 5I), whereas *S. subgrata* Blackburn occurs in Sydney and the Blue Mts and the basal colour of the elytra is red with blue markings. Male genitalia are different (Figs 2P, 2R). I consider *S. discoflava* Carter a valid species. Both of these species belong in the *S. distinguenda* Saunders species group. A holotype and an allotype are located in the SAMA collection.

#### *New synonyms in Stenoderes (Castiarina)*

*S. timida* Kerremans = *S. australasiae* C & G (see p. 2). *S. alliceae* Barker = *S. bicolor* C & G (see p. 2). *S. kalbarri* Barker (holotype male, Kalbarri National Park, WAMA) = *S. bicolor* Kerremans 1898 (holotype female, Australia, BMNH). The holotype of *S. bucolica* is a badly faded and discoloured specimen, difficult to recognise. The species occurs in the Northampton and Murchison

River districts, W.A., on the flowers of *Thryptomenè* sp. *S. goldingi* Barker = *S. danesi* Obenberger (see p. 2). *S. chohuati* Thérèy = *S. sancta* Carter = *S. deyrollei* Thomson (see p. 4).

*S. clarki* Carter (holotype male, Busselton, W.A., NMVA) = *S. eremita* Blackburn (holotype Eucla, W.A., BMNH). This species belongs in the *S. gibbicollis* Saunders species group. The lateral margins of the pronotum are pale yellow as is the basal colour of the elytra. It has been confused with *S. rufa* Barker sp. nov. named herein from W.A., which has red lateral margins to the pronotum and elytra with red basal colour.

*S. yilgarni* Obenberger (holotype male, Yilgarn, W.A., NMPC 23393) = *S. flaviceps* Carter (syntype male, Geraldton, W.A., NMVA). Barker (1983) synonymised this species with *S. pallidiventris* C & G. Although the colour and elytral markings of the two species are similar, differences in structure of male genitalia and external morphology place them in different species groups. *S. flaviceps* has bispinose elytra while *S. pallidiventris* has trispinose elytra. *S. fairmairei* Kerremans = *S. hoffmanseggii* Hope (see p. 4).

*S. electa* Kerremans (holotype, Australia, BMNH) = *S. inconspicua* Saunders (holotype female, Aust., BMNH). *S. electa* was wrongly synonymised with *S. laena* Thomson by Barker (1979). The type of *S. electa* is a small specimen, easily confused with the other species. *S. laena* occurs in W.A. and is a member of the *S. flavopicta* (Boisduval) species group while *S. inconspicua* occurs in N.S.W. and southern Qld and belongs in its own species group. *S. blackburni* Carter = *S. julia* Thomson (see p. 4).

*S. dawsonensis* Blackburn 1890 (holotype female, Dawson River, Qld, BMNH) = *S. liliputana* Thomson (holotype male, New Holland, MNHM). The holotype of *S. liliputana* is a smaller specimen and has no pre-apical yellow spot on the elytra which is all black from before the middle. The holotype of *S. dawsonensis* is a larger specimen and has a large pre-apical yellow spot on each elytron. It is possible that the size and pattern differences are sex-linked. *S. alpestris* Barker = *S. montigena* Oke (see p. 2). *S. cara* Blackburn = *S. ochreiventris* Saunders (see p. 6).

*S. auripennis* Barker (replacement name for *S. aurifera* Carter 1922, homonym: holotype female, Kuranda, Qld, NMVA) = *S. pallas* Blackburn (holotype male, Thursday Is., BMNH). There are few specimens of *S. pallas* in Australian collections and the holotype of *S. aurifera* had been confused with an unidentified species also found in Qld. *S. aurohimbata* Carter = *S. puella* Saunders (see p. 2).

*S. transversepicta* Thomson (holotype female, Swan River (sic), MNHN) = *S. scalaris* (Boisduval)



(holotype female, MNHN). There is a N.S.W. specimen of *S. scalaris* in ANIC identical to the holotype of *S. transversepicta*. Both have reduced elytral pattern. The species has never been recorded reliably from W.A.

*S. cordifer* Kerremans (syntype male, W.A. (sic), BMNH) = *S. thomsoni* Saunders (holotype female, Aust., BMNH). The pattern on the elytra of the holotype of *S. cordifer* is typical of specimens collected in Tasmania attributable to *S. thomsoni*. *S. thomsoni* is a widespread species in eastern Australia but does not occur in W.A.

### Species Descriptions

#### *Stigmodera (Castiarina) rufa* sp. nov. FIGS 2E, 6A

*Stigmodera eremita* (Barker, 1979: 17) *nee* Blackburn 1890.

**Holotype**, ♂, Talling Stn, Pindar, W.A., 27.ix.1980, S. Barker & D. J. Williams, WAMA.

**Allotype**, ♀ same data as holotype, WAMA.

**Paratypes**, W.A.: 9 ♂♂, 10 ♀♀, same data as holotype, WAMA & SAMA; ♂, 2 ♀♀, Pindar, Nov. 1957, B. Barker, SAMA; 3 ♂♂, Murchison, 20.xii.1967, F. H. Uther Baker, WAMA; ♀ Payne's Find, 18.ix.1970, S. Barker, SAMA; 2 ♂♂, 1 ♀, Youanmi, 5.ix.1971, F. H. Uther Baker, WAMA; 9 ♂♂, 3 ♀♀, Mary Springs, 8.ix.1970, K. & E. Carnaby, SAMA; 2 ♂♂, Ankertell, H. W. Brown, SAMA; 3 ♂♂, 1 ♀, Pindar, 2/7/11.ix.1976, R. P. McMillan, WAMA; 2 ♂♂, 3 ♀♀, Talling Stn, Pindar, 28.9.1980, S. Barker, D. J. Williams, WAMA & SAMA; 1 ♀, 17 km W Mullewa, 29.ix.1980, S. Barker, D. J. Williams, SAMA; 1 ♀, 16 km E Mt Magnet, 20.ix.1980, S. Barker, D. J. Williams, SAMA; 1 ♂, 2 ♀♀, 1-2 km SW Tamala T.O., Shark Bay, 23/25.ix.1980, S. Barker, D. J. Williams, SAMA; 2 ♂♂, 3 ♀♀, Mary Springs, 8.ix.1970, K & E. Carnaby, RWSO; 2 ♂♂, 1 ♀, Marloo Stn, Wurarga, Goerling, RMBB; 1 ♂, 1 ♀, Wurarga, H. Brown, RMBB.

**Colour**. Head, antennae, undersurface and legs black with blue reflections. Scutellum dark blue. Pronotum black with blue reflections in middle, red at sides. Elytra red with following black markings: basal margin; pre-medial fascia the ends expanded anteriorly obliquely over humeral callus reaching anterior margin, and posteriorly sinuously reaching lateral margin (in most specimens there is little posterior expansion) enclosing basal spot and one on margin; broad post-medial fascia reaching margin, extending anteriorly and posteriorly along suture; mark covering whole of apex. Hairs silver. **Shape and sculpture**. Head closely punctured,

median sulcus, muzzle short. Antennae: segments 1-3 obconic, 4-11 toothed. Pronotum closely punctured, small basal fovea extending forwards to middle as thin glabrous line, small basal notches closer to margin than to middle; projecting forwards in middle of apical margin, basal margin barely bisinuate; laterally parallel-sided at base, rounded out to widest part before middle, rounded to apex. Scutellum scutiform, without punctures, glabrous, flat. Elytra punctate-striate, intervals convex at sides and apex, less so in middle, punctured; laterally angled out from base, rounded at humeral callus; concave then rounded out after middle and narrowed to bispinose apex; marginal spine sharp, sutural spine minute, rounded and indented between, apices barely diverging, apical margin sub-errate. Undersurface with close shallow punctures, hairy, hairs long.  $S_7$ : truncate in both sexes.

**Size**. Males,  $10.8 \pm 0.12 \times 3.9 \pm 0.04$  mm (38). Females,  $11.6 \pm 0.15 \times 4.3 \pm 0.08$  mm (31).

**Male genitalia**. (Fig. 2E) Curved in dorso-ventral plane. Parameres gradually angled outwards from basal piece, rounded off and tapered to apices. Median lobe pointed, sides acutely angled away. Apophysis of basal piece wide. Aedeagus in *S. gibbicollis* (Fig. 2C) is larger. Parameres broader at basal piece and not angled as far apart towards apex, gradually rounded then abruptly, close to apex. Median lobe pointed, sides acutely angled away. Apophysis of basal piece wide.

**Distribution**. W.A.: Murchison District, Goldfields, Shark Bay, Mullewa District.

**Remarks**. Adult specimens are commonly found associated with *Eremophila* sp. Member of the *S. gibbicollis* Saunders species group. This species has been misidentified as *S. eremita* Blackburn in Australian collections, as it has been unrecognised that *S. clarki* Carter is a synonym of *S. eremita* Blackburn. *S. rufa* can be readily distinguished from *S. eremita* (Fig. 6F) which has yellow elytra and yellow lateral markings on the pronotum, and *S. eyrensis* Barker sp. nov. (Fig. 6B) which has yellow to orange elytra and lateral markings on the pronotum. In *S. rufa* the red colour of the pronotum and elytra fades in old specimens. The specific name is derived from *rufus* L. red.

#### *Stigmodera (Castiarina) eyrensis* sp. nov. FIGS 2F, 6B

**Holotype**, ♂, 1 km W Iron Knob, S. Aust., 28.ix.1982, S. Barker, J. Gardner, H. Vanderwoude, SAMA I 21158.

**Allotype**, ♀, same data as holotype, SAMA I 21159.

*Paratypes* S. Aust.: 7 ♂♂, 9 ♀♀, same data as holotype SAMA; 1 ♂, 4 ♀♀, 7 km E Kimba, 14.x.1982, S. Barker, P. Kempster, H. Vanderwoude, SAMA.

*Colour.* Head blue. Antennae: segments 1-3 green-bronze; 4-11 bronze. Pronotum dark blue in middle, yellow to orange at sides. Scutellum dark blue. Elytra yellow to orange with following dark blue markings; narrow basal margin; short pre-medial fascia not reaching margin, ends expanded anteriorly meeting basal margin and enclosing basal spot on each elytron; post-medial fascia expanded anteriorly on suture and connected along suture to pre-medial fascia; mark covering apex and connected along suture to post-medial fascia. Undersurface blue. Legs: femora blue; tibia and tarsomeres bronze-green. Hairs silver.

*Shape and sculpture.* Head closely punctured, broad median sulcus, muzzle short. Antennae: segments 1-3 obconic; 4-11 toothed. Pronotum closely punctured, basal fovea extending forwards to middle as glabrous line, apical margin projecting in middle, basal margin barely bisinuate; laterally rounded from base to apex, widest before middle. Scutellum scutiform, without punctures, glabrous, flat, excavate. Elytra punctate-striate, intervals convex, less so in middle, punctured and wrinkled; laterally angled out from base, rounded at humeral callus, concave, rounded after middle, narrowed to bispinose apex; sharp marginal spine, minute sutural spine, margin rounded and indented between spines, apices hardly diverging, apical margin subserrate. Undersurface with shallow punctures, edges of abdominal segments glabrous; moderately hairy, hairs medium length. S<sub>7</sub>: truncate in male; rounded in female.

*Size.* Males, 12.0 ± 0.19 × 4.4 ± 0.08 mm (9). Females, 13.8 ± 0.19 × 5.2 ± 0.08 mm (14).

*Male genitalia.* (Fig. 2F). Curved in dorso-ventral plane. Parameres gradually angled outwards from basal piece to widest part after middle, abruptly rounded to apices. Median lobe pointed, sides obtusely angled away. Apophysis of basal piece medium width.

*Distribution:* S. Aust.: Upper Eyre Peninsula.

*Remarks.* This species belongs in the *S. gibbicollis* Saunders species group. It most resembles *S. rufa* Barker sp. nov., but has yellow to orange not red markings on the pronotum and elytra, is a larger species, and is associated with *Acacia papyrophylla* not *Eremophila* species. The specific name is derived from the type locality Eyre Peninsula.

*Stigmodera (Castiarina) stellata* sp. nov.  
FIGS 2G, 6E

*Holotype.* ♂, Parmango's Rd, 18 km S Deralinya ruin, Balladonia, W.A., 22.x.1982, S. Barker, P. G. Kempster, H. Vanderwoude, WAMA.

*Allotype.* ♀, 92 km S of Balladonia, W.A., 9.xii.1974, S. Barker, SAMA 1 21160.

*Paratypes.* W.A.: 1 ♀, 8 km E Yellowdine, 13.xi.1980, T. M. S. Hanlon, MPWA; 1 ♀, Johnston Lake, 8.xi.1981, M. Powell, MPWA; 4 ♂♂, 1 ♀, 5 km S Lake Cronin, 8.xi.1981, S. Wilson, D. Knowles, M. Powell, MPWA; 1 ♀, 28 km N Ravensthorpe, 15.xi.1981, T. M. S. Hanlon, MPWA; 1 ♂, Parmango's Rd, 20 km SW Deralinya ruin, 20.xi.1982, S. Barker, P. G. Kempster, H. Vanderwoude, SAMA; 2 ♂♂, 17 km N Dempster's Rd, Scadden Rd crossing, 18.x.1982, S. Barker, P. G. Kempster, H. Vanderwoude, SAMA; 1 ♂, 35 km W Salmon Gums, 8.x.1983, G. Browning, G. Mutze, SAMA; 1 ♀, 5 km SW Lake Cronin, 24.xi.1977, K. T. Richards, WADA; 1 ♂, 3 ♀♀, 80 km E Hyden, 24.xi.1977, K. T. Richards, WADA; 1 ♀, Boyatup, 13.x.83, WADA.

*Colour.* Head, antennae, scutellum, undersurface and legs bronze. Pronotum bronze in middle, yellow at sides. Elytra yellow with following black markings with blue reflections: basal margin; broad premedial fascia reaching lateral margin, expanded forwards from anterior edge over humeral callus and meeting basal margin, enclosing large basal spot and small spot on lateral margin; broad post-medial fascia reaching margin, convex forwards; pre-apical mark covering apex and spines, enclosing yellow pre-apical spot on each elytron in most specimens, absent in a few; all marks connected down suture. Hairs silver.

*Shape and sculpture.* Head with close punctures, shallow median sulcus, muzzle short. Antennae: segments 1-3 obconic; 4-11 toothed. Pronotum with close punctures, small basal fovea extending forward to middle as thin glabrous line, basal notches represented by glabrous areas closer to margin than middle; projecting forward slightly in middle of apical margin, basal margin barely bisinuate; laterally parallel-sided at base, rounded to widest part before middle, rounded to apex. Scutellum scutiform, without punctures, glabrous, excavate along mid-line. Elytra punctate-striate, intervals convex and punctured, less so in middle; laterally angled out from base, rounded at humeral callus, concave, rounded after middle and narrowed to bispinose apex; marginal spine medium sized but blunt, sutural spine minute, rounded and indented between, apical margin sub-serrate. Undersurface with close shallow punctures, except edges of

abdominal segments which are glabrous, densely hairy, hairs medium-length. S<sub>7</sub>: truncate in male; indented in middle in female.

*Size.* Males, 12.4 ± 0.33 × 4.5 ± 0.16 mm (10). Females, 13.7 ± 0.20 × 5.2 ± 0.10 mm (10).

*Male genitalia.* (Fig. 2G) Curved in dorso-ventral plane. Parameres angled outwards from basal piece, parallel-sided from before middle, rounded off and tapered to apices. Median lobe pointed, sides angled away. Apophysis of basal piece wide, slightly elongate. Parameres in *S. eremita* Blackburn (Fig. 2D) angled outwards from basal piece, rounded before middle, narrowed and parallel-sided, rounded off to apices. Median lobe pointed, sides acutely angled away. Apophysis of basal piece narrow and tapered to apices.

*Remarks.* Member of *S. gibbicollis* Saunders species group. Closest to *S. eremita* but male genitalia differ, is a larger species than *S. eremita*. *S. stellata* is slightly cylindrical in shape while *S. eremita* is more dorso-ventrally flattened. *S. stellata* occurs in the Goldfields and Esperance districts W.A., *S. eremita* in the Murchison district W.A. The adults of *S. stellata* are found on the flowers of *Melaleuca* sp. The specific name is derived from *stellatus* L. starred.

*Stigmodera (Castiarina) incognita* sp. nov.  
FIGS 2H, 6D

*Holotype.* ♂, 85 km E Lake King, W.A., 24.x.1983, M. Powell, WAMA.

*Allotype.* ♀, same data as holotype, WAMA.

*Paratypes.* 1 ♀, same data as holotype, MPWA; 1 ♂, Yellowdine, 13.xi.1977, M. Powell, SAMA.

*Colour.* Head, antennae, scutellum, undersurface and legs coppery-bronze. Pronotum coppery bronze in middle, red at sides. Elytra yellow with red margins and following markings; bronze narrow basal margin, the following black with blue reflections; pre-medial fascia reaching margin expanded anteriorly reaching basal margin, enclosing yellow basal spots on each elytron and elongate red spot on the margin; broad post-medial fascia reaching margin; pre-apical spade-shaped mark, all marks connected down suture. Hairs silver.

*Shape and sculpture.* Head closely punctured, shallow median sulcus, short muzzle. Antennae compressed; segments 1-3 obconic; 5-11 toothed. Pronotum closely punctured, basal fovea extending forwards to middle as glabrous line, basal notches represented by glabrous area on each side closer to margin than middle; apical margin projecting in middle, basal margin bisinuate; laterally parallel-

sided at base, rounded to widest part before middle, rounded and narrowed to apex; overall slightly bulbous. Scutellum scutiform, glabrous, flat. Elytra punctate-striate, intervals convex, punctured and wrinkled; laterally angled out from base, rounded at humeral callus, concave, rounded after middle, tapered then strongly rounded to bispinose apex; both spines minute and blunt, margin rounded and indented between spines, apices hardly diverging, apical margin subseriate. Undersurface, with shallow punctures, edges of abdominal segments glabrous, densely hairy, hairs medium length. S<sub>7</sub>: male truncate; female truncate and slightly indented in middle.

*Size.* Males, 13.1 × 5.1 mm (2). Females, 15.8 × 6.0 mm (2).

*Male genitalia.* (Fig. 2H). Curved in dorso-ventral plane. Parameres angled outwards from basal piece, rounded after middle, parallel-sided then rounded and tapered to apices. Median lobe pointed, sides angled away. Apophysis of basal piece medium width. In *S. rufolimbata* Carter (Fig. 2I) parameres are angled outwards from basal piece, rounded at middle, parallel-sided, rounded outwards and narrowed to apices. Median lobe pointed, sides acutely angled away. Apophysis of basal piece medium width, slightly widened at apex.

*Distribution.* W.A.: Great Southern district.

*Remarks.* Member of the *S. gibbicollis* Saunders species group on basis of colour, pattern, male genitalia and external morphology. Most resembles *S. rufolimbata* (Fig. 6C) but the pronotum is bronze in the middle and distinctly bulbous, whereas in *S. rufolimbata* the pronotum is blue in the middle and rounded. The specific name is derived from *incognitus* L. unknown.

*Stigmodera (Castiarina) uncata* sp. nov.  
FIGS 2I, 6K

*Holotype.* ♂, Kiata, Vic., Dec. 1967, K. Hateley, SAMA I 21161.

*Allotype.* ♀, same data as holotype, SAMA I 21162.

*Paratypes.* Vic.: 1 ♀, 14 km S Murraysville, 31.x.1982, J. & D. Gardner, SAMA; 1 ♀ Sea Lake, Nov. 1916, G. Goudie, NMVA; 1 ♀ Salisbury, 6.xii.1958, E. Jenz, NMVA.

*Colour.* Head, antennae, pronotum, undersurface and legs bronze with coppery reflections. Scutellum black. Elytra yellow with red margins and following black markings: basal margin; pre-medial fascia represented by elongate mark on suture, sinuous mark running over humeral callus and around to lateral margin; post-medial fascia reaching margin;

pre-apical anchor-shaped mark, the last two connected down suture. Hairs silver.

*Shape and sculpture.* Head closely punctured, eyes bulbous, shallow median sulcus, muzzle short. Antennae: segments 1-3 obconic; 4-11 toothed. Pronotum closely punctured, punctures larger at sides than in middle, small basal fovea extending to middle as glabrous line, basal notches closer to margin than middle; projecting forwards slightly in middle of apical margin, basal margin virtually straight; laterally angled inwards from base, rounded to widest part before middle, rounded and narrowed to apex. Scutellum cordiform, glabrous, excavate in middle. Elytra punctate-striate, intervals punctured, convex at apex and sides almost flat in middle; laterally angled outwards from base rounded at humeral callus, concave, rounded after middle and tapered to bispinose apex; marginal spine small and blunt, sutural spine slightly larger and sharper, rounded between, apices diverging. Undersurface with close shallow punctures, edges of abdominal segments glabrous, dense long hair.  $S_7$ : truncate in male; narrowly truncate in female. *Size.* Male, 12.4×15.1 mm (1). Females, 13.6×5.5 mm (4).

*Male genitalia.* (Fig. 2T). Parameres parallel-sided from basal piece, angled outwards before middle, gradually rounded and narrowed to apices. Median lobe blunt, sides obtusely angled away. Apophysis of basal piece medium width. Aedeagus in *S. simulata* C & G (Fig. 2U) larger. Parameres gradually angled outwards from basal piece, gradually rounded and narrowed to apices. Median lobe pointed, sides acutely angled away. Apophysis of basal piece wide.

*Distribution.* Vic: Big and Little Desert.

*Remarks.* Belongs in the *S. simulata* species groups. Distinguished by the prominent anchor-shaped mark at the apex of the elytra and male genitalia. The specific name is derived from *uncatus* L. hooked.

***Stigmodera (Castiarina) kempsteri* sp. nov.**  
FIGS 2Y, 7A

*Holotype.* ♂, 7 km E Norseman, W.A., on *Eremophila ionantha*, 17.x.1982, P. G. Kempster, WAMA.

*Allotype.* ♀, same data as holotype, WAMA.

*Paratypes.* W.A.: 5 ♂♂, 25 km SW Deralinya ruins, Balladonia district, 20.x.1982, S. Barker, P. G. Kempster, H. Vanderwoude, WAMA & SAMA; 5 ♂♂, 2 ♀♀, 18 km SW Deralinya ruins, 22.x.1982, S. Barker, P. G. Kempster, H. Vanderwoude, WAMA & SAMA.

*Colour.* Head, antennae, pronotum, scutellum, undersurface and legs bronze. Elytra pale yellow with following black markings: narrow basal margin; pre-medial fascia, expanded anteriorly over humeral callus from anterior end and posteriorly to margin from posterior end; post-medial fascia reaching margin, projecting forwards slightly past middle of anterior edge and backwards slightly past middle of posterior edge, expanded anteriorly and posteriorly on suture; pre-apical spade-shaped mark covering tip of apex, all marks connected down suture. Hairs silver.

*Shape and sculpture.* Head closely punctured, median sulcus, muzzle very short. Antennae: segments 1-3 obconic; 4-11 toothed. Pronotum closely punctured, very small basal fovea extending forwards to middle as impressed line; projecting forwards slightly in middle of apical margin, basal margin barely bisinuate; laterally rounded from base to apex, widest before middle. Scutellum scutiform, without punctures, excavate. Elytra punctate-striate, intervals flat in middle, elsewhere convex, with deep punctures; laterally angled out from base, rounded at humeral callus, concave then rounded after middle to spineless apex; apex narrowly truncate or very slightly rounded, apices diverging. Undersurface shallowly punctured, very hairy, hairs moderately long.  $S_7$ : truncate in both sexes.

*Size.* Males, 11.5 ± 0.32×4.4 ± 0.12 mm (11). Females, 12.0×4.5 mm (3).

*Male genitalia.* (Fig. 2Y). Parameres parallel-sided from basal piece, rounded outwards to widest part after middle, parallel-sided, abruptly rounded near apex. Median lobe with blunt point, sides obtusely angled away. Basal piece of apophysis medium width. Aedeagus of *S. turneri* Barker (Fig. 2X) is of same proportion but larger. Median lobe with blunt point, sides acutely angled away. Apophysis of basal piece wide.

*Distribution.* W.A.: Balladonia and Norseman Districts.

*Remarks.* Adults are associated with *Eremophila* sp. Member of the *S. convexa* Carter species group, closest to *S. turneri* Barker. Similar in colour and markings to *S. sagittaria* C & G which belongs in its own species group. *S. kempsteri* is distinguished from that species by its bispinose elytra; *S. sagittaria* has trispinose elytra. Named after Mr P. G. Kempster, Adelaide.

***Stigmodera (Castiarina) athertonensis* sp. nov.**  
FIGS 2K, 7B

*Holotype.* ♂, Mt Carbinc, Qld, 9.i.1981, S. Barker, SAMA 1 21163.

*Allotype* ♀, Davies Creek State Forest, Qld, 4.i.1981, *S. Barker*, SAMA I 21164.

*Paratypes*: Qld: 1 ♂, Talga, 21.xii.1977, *N. Gough*, DPIQ; 1 ♀, Mt Carbine, 11.ii.1978, *R. I. Storey*, DPIQ; 1 ♀, Kuranda, 28.xii.1973, *A. & M. Walford-Huggins*, AWHQ.

*Colour*. Head purple with green muzzle. Antennae green with yellow reflections. Pronotum purple. Scutellum coppery. Elytra yellow with following dark blue markings: narrow basal margin with green reflections; spot over each humeral callus, remnant of pre-medial fascia with purple reflections; post-medial fascia reaching margin with purple reflections; mark covering apex with purple reflections, all marks connected down suture. Undersurface: sternum purple; abdomen testaceous with green or purple reflections. Legs: femora green ventral surface, blue-green dorsal surface; tibia and tarsomeres blue-green. Hairs silver.

*Shape and sculpture*. Head closely punctured, broad median sulcus, medium muzzle. Antennae: segments 1-3 obconic; 4-11 toothed. Pronotum closely punctured, basal fovea extending forwards to middle as glabrous line, basal notches closer to margin than middle; apical margin projecting in middle, basal margin barely bisinuate; laterally parallel-sided at base, rounded to widest part before middle, rounded and narrowed to apex. Scutellum scutiform, punctured, flat. Elytra punctate-striate, intervals heavily punctured; laterally angled out from base, rounded at humeral callus, concave, rounded after middle, rounded and narrowed to bispinose apex; both spines small, margin rounded and indented between spines, apices diverging, apical margin subserrate. Undersurface with shallow punctures, moderately hairy, hairs short on abdomen, medium length on sternum.  $S_7$ : truncate in both sexes.

*Size*. Males, 15.6 × 6.2 mm (2). Females, 16.9 × 6.7 mm (3).

*Male genitalia*. (Fig. 2K). Heavily chitinised as are other members of *S. jekelli* Saunders species group. Parameres parallel-sided at basal piece, rounded outwards, widest after middle, gradually rounded to apex. Median lobe with sharp point, sides angled away, then drop more or less vertically. Apophysis of basal piece short and wide. Aedaeagus in *S. jekelli* (Fig. 2L) larger. Parameres parallel-sided at basal piece, rounded outwards after middle, then parallel-sided and rounded off abruptly, tapered to apices. Median lobe and apophysis of basal piece similar to those in *S. athertonensis*.

*Distribution*. Qld: Atherton Tableland.

*Remarks*. Member of the *S. jekelli* species group. Distinguished from other members of the group by the purple head and pronotum. A larger species

than *S. fulviventris* Macleay (Fig. 7C) which occurs in southern Queensland, N.S.W. and Vic. *S. jekelli* occurs in S. Aust. and *S. rubriventris* Blackburn in W.A. The specific name is derived from the type locality.

*Stigmodera (Castiarina) melrosensis* sp. nov.

FIGS 1C, 5H

*Holotype*. ♂, Mt Remarkable N.P., Melrose, S. Aust., 6.i.1980, *S. Barker*, SAMA I 21165.

*Allotype*. ♀, same data as holotype, SAMA I 21166.

*Paratypes*. S. Aust.: 19 ♂♂, 4 ♀♀, same data as holotype, SAMA; 17 ♂♂, 12 ♀♀, Mt Remarkable N.P., Melrose, 30.xii.1968, *S. Barker*, SAMA.

*Colour*. Head, antennae, pronotum, scutellum, undersurface and legs green with gold reflections. Elytra pale yellow with following variable markings: narrow green basal margin; dark blue mark covering humeral callus, reaching apical and lateral margins; triangular blue pre-medial mark on each side of suture; post-medial blue fascia, convex anteriorly and posteriorly and either reaching margin, not touching margin, represented by a medial spot on each elytron or entirely absent; pre-apical blue mark which may be reduced or absent; green mark down suture covering apical spines. Hairs silver.

*Shape and sculpture*. Head closely punctured, median sulcus, muzzle short. Antennae segments: 1-3 obconic; 4-11 toothed. Pronotum closely punctured, small basal fovea extending to apical margin as medium impressed line, basal notches closer to margin than middle; apical margin straight, basal bisinuate; laterally parallel-sided at base, rounded to apex, widest at middle. Scutellum scutiform, punctured, excavate. Elytra punctate-striate, all intervals convex, punctured and wrinkled; laterally angled out from base, rounded at humeral callus, concave then rounded after middle, rounded and narrowed to bispinose apex; marginal spine large, sutural minute, margin rounded and indented between, apices slightly diverging. Undersurface closely punctured, moderately hairy, hairs short.  $S_7$ : truncate in both sexes.

*Size*. Males, 7.3 ± 0.11 × 2.6 ± 0.03 mm (37). Females, 7.7 ± 0.11 × 2.8 ± 0.04 mm (17).

*Male genitalia*. (Fig. 1C). Parameres parallel-sided from basal piece until after middle, rounded out to widest part, rounded and narrowed to apex. Median lobe pointed, sides acutely angled away. Apophysis of basal piece medium width. Parameres of *S. hilaris* Hope (Fig. 1A) are broader at basal piece, sides slightly angled outwards then rounded out to widest part after middle, rounded and tapered to apices. Median lobe pointed, sides acutely angled away. Apophysis of basal piece medium width.

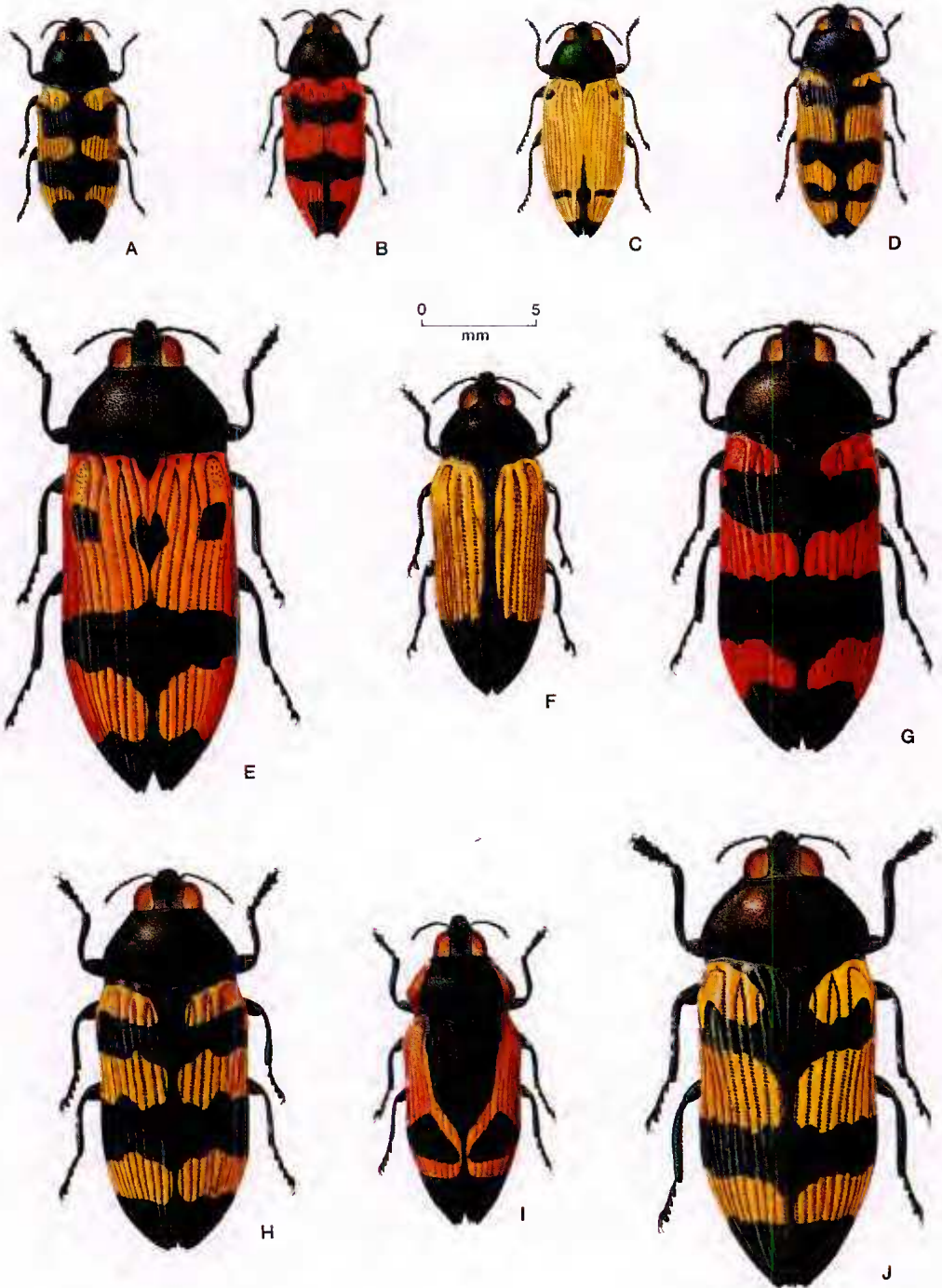


Fig. 4. A. *Stigmodera haroldi* Saunders, B. *S. turbulenta* sp. nov., C. *S. eborica* Carter, D. *S. moribunda* Saunders, E. *S. julia* Thomson, F. *S. warningensis* sp. nov., G. *S. alternozona* Thomson, H. *S. cupricollis* Saunders, I. *S. terraereginae* Blackburn, J. *S. deyrollei* Thomson.

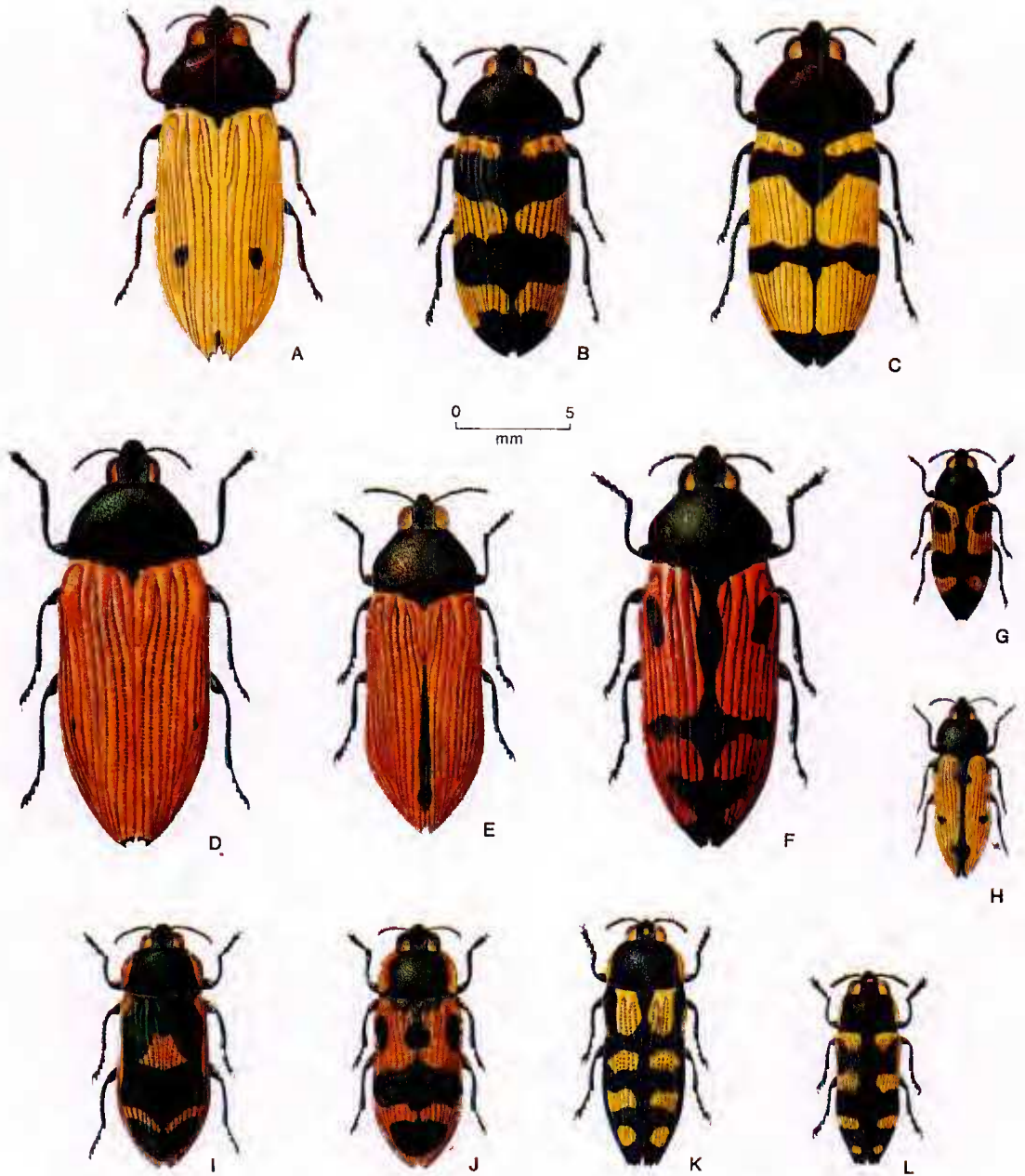


Fig. 5. A. *Stigmodera bimaculata* Saunders, B. *S. placens* Kerremans, C. *S. ochreiventris* Saunders, D. *S. guttata* Blackburn, E. *S. viridolinea* sp. nov., F. *S. burnsi* sp. nov., G. *S. capensis* sp. nov., H. *S. melrosensis* sp. nov., I. *S. discoflava* Carter, J. *S. blackdownensis* sp. nov., K. *S. malleeana* Carter, L. *S. browningi* sp. nov.

*Distribution*: S. Aust. Mt Remarkable.

*Remarks*. All specimens were collected on the flowers of *Bursaria spinosa*. Member of *S. hilaris* species group. Superficially resembles *S. sexguttata* Macleay, but male genitalia differ from that species (Fig. 1E) which belongs in its own species group. The specific name is derived from the type locality Melrose.

*Stigmodera (Castiarina) capensis* sp. nov.  
FIGS 1D, 5G

*S. auro limbata* (Barker 1983: Fig. 2W) nec Carter 1922.

*Holotype*. ♂, Cape York, Qld, SAMA I 21167.

*Allotype*. ♀, Cape York, Qld, SAMA I 21168.

*Paratype*. 1 ♂, Cape York, Qld, SAMA.

*Colour*. Head, antennae, pronotum, scutellum, undersurface and legs green with yellow reflections. Elytra yellow with following markings: black with green reflections on narrow basal margin and along suture; oblique broad black vitta over each humeral callus; broad post-medial black fascia reaching margin; black apical mark, all marks broadly connected down suture. Hairs silver.

*Shape and sculpture*. Head closely punctured, broad median sulcus, short muzzle. Antennae compressed, segments: 1-3 obconic; 4-11 toothed. Pronotum closely punctured, narrow basal fovea extending forwards to apical margin as glabrous line, basal notches represented by small glabrous area on each side closer to margin than middle; apical margin straight, basal margin bisinuate; laterally parallel-sided at base, rounded to widest part before middle, rounded and narrowed to apex. Scutellum scutiform, punctured, flat. Elytra punctate-striate, intervals convex, punctured and wrinkled; laterally angled out from base, rounded at humeral callus, concave, rounded after middle and narrowed to bispinose apex; marginal spine broad but sharp, minute sutural spine, margin rounded and indented between spines, apices diverging. Undersurface shallow punctures, sparse short hairs.  $S_7$ : truncate in both sexes.

*Size*. Males, 7.2 × 2.6 mm (2). Female, 6.4 × 2.5 mm (1).

*Male genitalia*. (Fig. 1D). Parameres slightly angled outwards from basal piece, rounded after middle to widest part, tapered, pointed at apices. Median lobe pointed, sharp, sides acutely angled away. Apophysis of basal piece broad. In *S. goodingi* Barker (Fig. 1F) dimensions of aedeagus similar, but apices of parameres more pointed and centre of median lobe less so. Apophysis of basal piece more tapered.

*Distribution*. Qld: Cape York.

*Remarks*. Member of the *S. sexguttata* Macleay (Fig. 1E) species group. Superficially resembles a small specimen of *S. sexplagiata* Gory. However male genitalia are not wedge-shaped as in *S. sexplagiata* species group. The specific name is derived from *cap* L. Cape, referring to the type locality Cape York.

*Stigmodera (Castiarina) browningi* sp. nov.  
FIGS 3C, 5L

*Holotype*. ♂ 59 km S Balladonia, W.A., on *Eremophila dempsteri*, 3.x.1983, G. Browning, G. Mutze, WAMA.

*Allotype*. ♀, same data as holotype, WAMA.

*Paratypes*. W.A.: 15 ♂♂, 2 ♀♀, same data as holotype, WAMA & SAMA.

*Colour*. Head bronze with yellow frontal spot. Antennae blue-green. Pronotum bronze with blue reflections, yellow at sides. Scutellum dark blue. Elytra pale yellow with following dark blue markings: narrow basal margin; broad pre-medial fascia, both ends expanded anteriorly over humeral callus meeting basal margin, enclosing yellow basal spot and elongate yellow mark on margin; broad post-medial fascia reaching margin; apical mark enclosing pre-apical yellow spot in most specimens. Undersurface pale yellow with dark blue markings over sutures and at edges of abdominal segments and lateral marks on each side of  $S_4$ ,  $S_5$  and  $S_6$ . Legs dark blue. Hairs silver.

*Shape and sculpture*. Head closely and shallowly punctured, no median sulcus, very short muzzle, eyes bulbous. Antennae compressed, segments: 1-4 obconic; 5-11 toothed. Pronotum closely and shallowly punctured, minute basal fovea, basal notches on each side closer to margin than middle; apical margin slightly projecting in middle, basal margin almost straight; rounded from base, widest before middle, rounded and narrowed to apex. Scutellum scutiform, glabrous and flat. Elytra punctate-striate, intervals convex, punctured and wrinkled; laterally angled out from base, rounded at humeral callus, concave, rounded after middle and narrowed to trispinose apex; small marginal spine, larger middle spine, small sutural spine, margin rounded between spines, apices diverging. Undersurface shallow punctures, edges of abdominal segments glabrous, short sparse hairs.  $S_7$ : truncate in both sexes.

*Size*. Males, 8.9 ± 0.11 × 3.2 ± 0.05 mm (16). Females, 9.0 × 3.3 mm (3).

*Male genitalia*. (Fig. 3C). Parameres slightly angled outwards from basal piece, rounded before middle to widest part after middle, gradually rounded and narrowed to apices. Median lobe pointed, sides acutely angled away. Apophysis of basal piece



narrowed to apex. Parameres in *S. pallidiventris* C & G (Fig. 3D) slightly angled outwards from basal piece, rounded before middle to widest part after middle, slightly narrowed, abruptly rounded to apex. Median lobe pointed, sides gradually angled away. Apophysis of basal piece narrowed to apex.

*Distribution.* W.A.: Balladonia district.

*Remarks.* Belongs in the *S. decemmaculata* (Kirby) species group of which it is the smallest. Most resembles *S. pallidiventris* but has no red markings on the pronotum, elytra or undersurface as in that species. Specimens were collected on the flowers of *Eremophila dempsteri*. Named after Mr G. Browning, Adelaide.

*Stigmodera (Castiarina) tasmaniensis* sp. nov.  
FIGS 3E, 7J

*Holotype.* ♂, Bruny Is., Tas., 31.xii.1981, G. F. Bornemissza, SAMA 1 21169.

*Allotype.* ♀, Entrance Mt Field N.P., Tas., 26.i.1983, J. M. & S. Barker, H. Vanderwoude, SAMA 1 21170.

*Paratypes.* Tas.: 2 ♀♀, Lake Leake, 10.ii.1974, G. Hocking, SAMA; 1 ♀, Waterhouse, 4.i.1982, G. F. Bornemissza, SAMA; 1 ♀, Hobart, Lea, SAMA; 4 ♂♂, Bruny I., 5.i.1984, G. F. Bornemissza, SAMA; 1 ♀, Geeveston, 29.i.1984, G. G. Burns, GBVA; 1 ♂, 1 ♀, Zeehan, 2.ii.1984, G. G. Burns, GBVA; 1 ♂, National Park, 21.i.1985, G. G. Burns, GBVA.

*Colour.* Head and antennae blue or blue-green with a prominent yellow frontal spot. Pronotum black with blue-green reflections in middle, yellow at sides. Scutellum blue-green. Elytra yellow with following dark blue markings: narrow basal margin; broad pre-medial fascia; broad post-medial fascia; pre-apical mark covering apex, all marks coalesced along margin to form 5 yellow marks on each elytron, consisting of a basal spot, elongate mark on the margin at humeral callus, elongate medial mark, narrow fascia after middle, small pre-apical spot. Undersurface yellow with dark blue markings on margin and sutures. Legs dark blue. Hairs silver.

*Shape and sculpture.* Head with shallow punctures, shallow median sulcus, short muzzle. Antennae: segments 1-4 obconic; 5-II toothed. Pronotum with shallow punctures, basal fovea extending to middle as glabrous line, basal notches closer to margin than middle; projecting forwards broadly in middle of apical margin, basal margin almost straight; laterally parallel-sided at base, rounded before middle and narrowed to apex. Scutellum scutiform, without punctures, excavate. Elytra punctate-striate, intervals convex with punctures; laterally angled out

from base, rounded at humeral callus, concave rounded after middle to trispinose apex; marginal spine small and blunt angled outwards to the large and blunt middle spine, slightly indented to minute, blunt sutural spine. Undersurface with shallow punctures, moderately hairy, hairs moderately long. S<sub>7</sub>: truncate in male; indented in middle and with a distinct lip in female.

*Size.* Males, 12.7 ± 0.23 × 5.0 ± 0.08 mm (7). Females, 14.7 ± 0.36 × 5.7 ± 0.12 mm (7).

*Male genitalia.* (Fig. 3E). Parameres angled outwards from basal piece, rounded before middle, parallel-sided and rounded abruptly then tapered to apex. Median lobe pointed, sides acutely angled away at first then sinuously at greater angle. Apophysis of basal piece medium width. Parameres in *S. octospilota* (Fig. 3F) slightly angled outwards from basal piece, rounded before middle, parallel-sided then abruptly rounded and tapered to apices. Median lobe pointed but blunt, sides angled away. Apophysis of basal piece medium width.

*Distribution.* Tasmania.

*Remarks.* Member of the *S. octospilota* C & G species group. Only representative occurring in Tasmania. The elytral pattern is darker than in *S. octospilota*. The specific name has been derived from the area of occurrence, Tasmania.

*Stigmodera (Castiarina) pearsoni* sp. nov.  
FIGS 3G, 6I

*Holotype.* ♂, Blackdown Tableland, Qld, Nov.1982, S. Pearson, QMBA.

*Allotype.* ♀, same data as holotype, QMBA.

*Paratypes.* Qld: 2 ♂♂, same data as holotype, QMBA; 3 ♂♂, 1 ♀, Blackdown Tableland, 6.x.1973, E. E. Adams, SAMA & EAQA; 1 ♂, 1 ♀, Blackdown Tableland, E. E. Adams, SAMA & EAQA.

*Colour.* Head dark blue, bronze-green at base. Antennae bronze-green. Pronotum dark blue in middle, bronze-green at anterior margin, light blue or bronze-green at angles. Scutellum and undersurface dark blue. Elytra red-brown with narrow dark blue basal margin. Legs blue. Hairs silver.

*Shape and sculpture.* Head closely punctured, broad median sulcus, short muzzle. Antennae: segments 1-3 obconic; 4-II toothed. Pronotum closely punctured, small basal fovea extending forwards to middle as glabrous impressed line; apical margin projecting in middle, basal margin barely bisinuate; laterally parallel-sided at base, rounded before middle, rounded and narrowed to apex. Scutellum scutiform, punctured, flat. Elytra costate, scutellary, 1st, 3rd and 5th intervals raised, intervals between

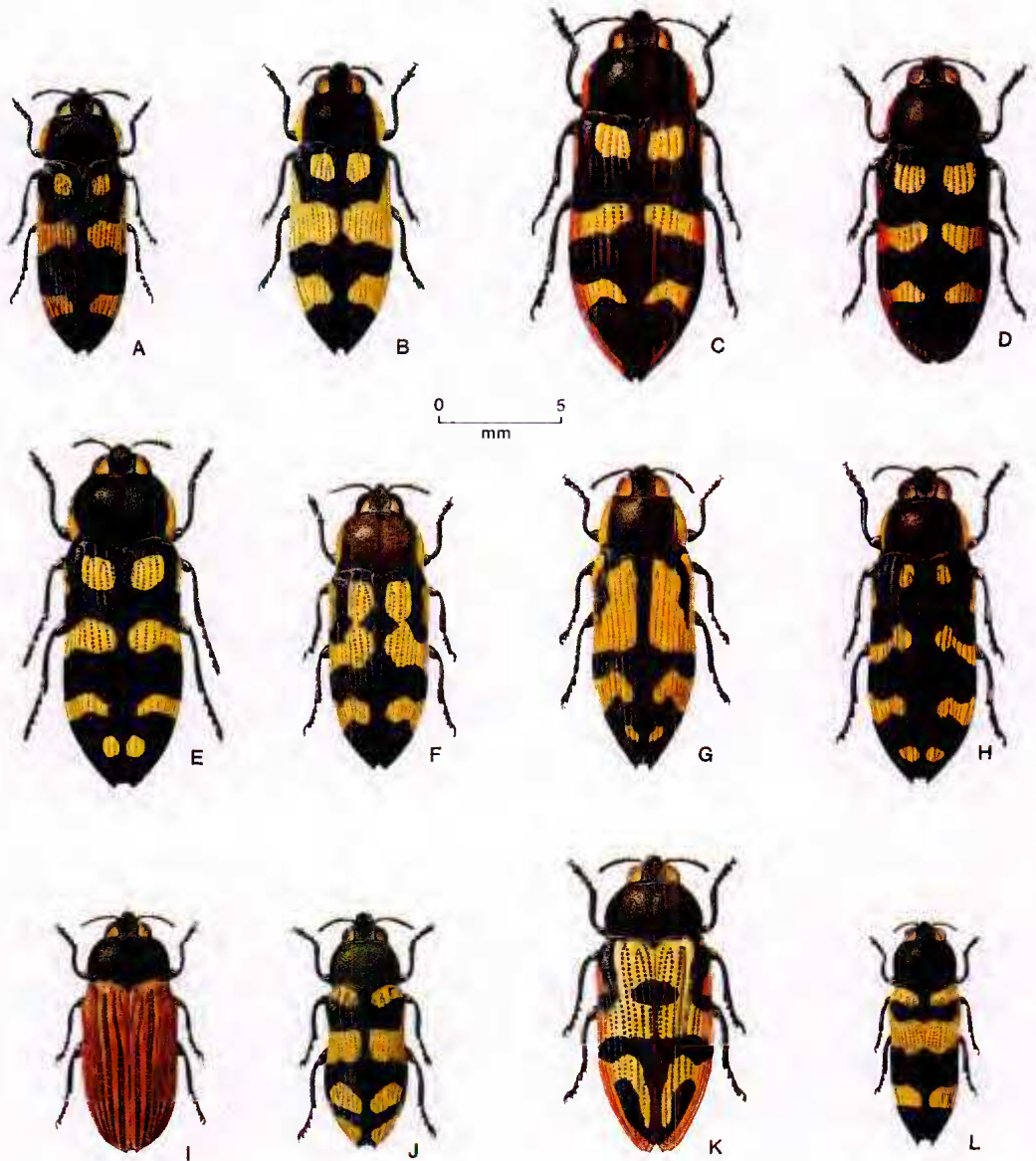


Fig. 6. A. *Stigmodera rufa* sp. nov., B. *S. eyrensis* sp. nov., C. *S. rufolimbata* Carter, D. *S. incognita* sp. nov., E. *S. stellata* sp. nov., F. *S. eremita* Blackburn, G. *S. humeralis* Kerremans, H. *S. victoriensis* Blackburn, I. *S. pearsoni* sp. nov., J. *S. hilleri* sp. nov., K. *S. uncatata* sp. nov., L. *S. cracentata* sp. nov.

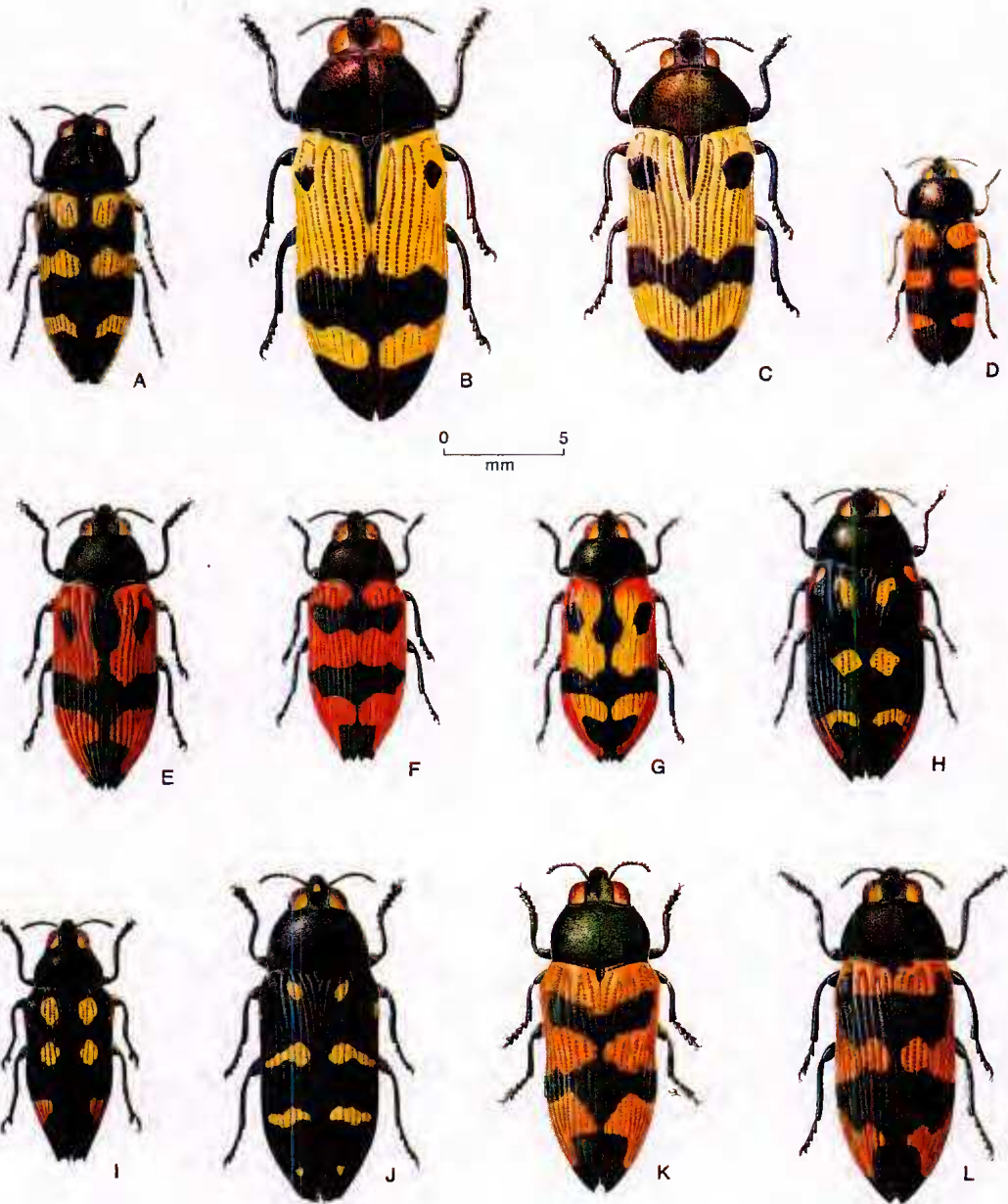


Fig. 7. A. *Stigmodera kempsteri* sp. nov., B. *S. athertonensis* sp. nov., C. *S. fulviventris* Macleay, D. *S. discolorata* sp. nov., E. *S. delectabilis* Hope, F. *S. dessarti* sp. nov., G. *S. tyrrhena* Blackburn, H. *S. pulla* sp. nov., I. *S. fusca* sp. nov., J. *S. tasmaniensis* sp. nov., K. *S. lukini* sp. nov., L. *S. coolsi* sp. nov.

flat, punctured and rough; laterally parallel-sided at base, slightly angled outwards, rounded at humeral callus, concave, rounded after middle and narrowed to bispinose apex; both spines minute, margin rounded and indented between spines; apices hardly diverging, apical margin subserrate. Undersurface shallow punctures, edges of abdominal segments glabrous, sparse short hairs.  $S_7$ : truncate in male; rounded in female.

*Size.* Males,  $9.9 \pm 0.30 \times 3.84 \pm 0.10$  mm (7). Females,  $11.3 \times 4.3$  mm (3).

*Male genitalia.* (Fig. 3G). Parameres slightly angled outwards from basal piece then angled further outwards before middle, rounded then angled further outwards until widest part, abruptly rounded and tapered to apices. Median lobe pointed, sides acutely angled away. Apophysis of basal piece narrow. Aedægus of *S. octomaculata* (Fig. 3H) larger but has same proportions except that apophysis of basal piece is wider.

*Distribution.* Qld: Blackdown Tableland, Expedition Range.

*Remarks.* The adults have been collected on the flowers of *Leptospermum* sp. Member of the *S. octomaculata* Saunders species group. It is the only lycid mimicking species known from this group. Named after Mr S. Pearson, Ranger, Blackdown National Park.

***Stigmodera (Castiarina) blackdownensis* sp. nov.**  
FIGS 2Q, 5J

*Holotype.* ♂, Blackdown Tableland, Qld, 6.x.1973, E. E. Adams, ANIC.

*Allotype.* ♀, Blackdown Tableland, Qld, Nov.1982, S. Pearson, QMBA.

*Paratypes.* Qld: 4 ♂♂, 7 ♀♀, same data as holotype, EAQA, ANIC, AWHQ, SAMA; 3 ♂♂, 1 ♀, Blackdown Tableland, 23.ix.1973, E. E. Adams, EAQA, AWHQ; 7 ♂♂, 3 ♀♀, Upper Stoney Creek, Blackdown Tableland, 9.xi.1981, S. Barker, P. Kempster, H. Vanderwoude, SAMA; 5 ♂♂, 4 ♀♀, same data as allotype, QMBA.

*Colour.* Head, antennae, scutellum either green with gold reflections, blue-green or blue. Pronotum either green with gold reflections, blue-green or blue in the middle, brown lateral margin. Elytra brown with the following green marks: narrow basal margin; elongate spot over each humeral callus, spot on suture in between; post-medial fascia projecting anteriorly in middle on each side and anteriorly and posteriorly on suture; preapical spade-shaped mark, all marks connected down suture. Undersurface blue-green. Legs: femora blue-green; tibia and tarsi green with gold reflections. Hairs silver.

*Shape and sculpture.* Head closely punctured, muzzle short. Antennae segments: 1-3 obconic; 4-11 toothed. Pronotum closely punctured, small basal fovea extending forwards to middle as glabrous line; projecting anteriorly in middle of anterior margin, basal margin barely bisinuate; laterally rounded from base, widest before middle rounded and narrowed to apex, lateral margin dorso-ventrally compressed at base, with a large shallow fovea at each basal angle. Scutellum scutiform, flat, glabrous. Elytra punctate-striate, intervals convex, slightly punctured in middle, heavily at sides; laterally angled outwards from base, rounded at humeral callus, concave, then rounded after middle and narrowed to bispinose apex; marginal spine small, sutural spine minute, margin rounded and indented between, apices diverging, apical margin subserrate. Undersurface shallowly punctured, moderately hairy, hairs short.  $S_7$ : broadly rounded in male; narrowly rounded in female.

*Size.* Males,  $10.2 \pm 0.21 \times 4.0 \pm 0.08$  mm (20). Females,  $11.2 \pm 0.18 \times 4.4 \pm 0.06$  mm (16).

*Male genitalia.* (Fig. 2Q). Parameres slightly angled inwards from basal piece then rounded and angled outwards, abruptly rounded at apices. Median lobe bluntly pointed in middle, sides acutely angled away. Apophysis of basal piece narrow.

*Distribution.* Qld: Blackdown Tableland, Expedition Range.

*Remarks.* Belongs in *S. distinguenda* Saunders species group. The elytral pattern most resembles *S. garrawillae* Carter but is a different colour, the elytra are bispinose whereas spines are absent in *S. garrawillae* and male genitalia are different (Fig. 2S). The specimens were collected on the flowers of *Baeckea* sp. The tableland area where this species and the previous one were collected is a vegetational island, with endemic plant and insect species. The name is derived from the type locality.

***Stigmodera (Castiarina) cracenta* sp. nov.**  
FIGS 3I, 6L

*Stigmodera atricollis* (Barker, 1983: Fig. 1F) *neq* Saunders 1869.

*Holotype.* ♂, Tallering Stn, Pindar, W.A., 27.ix.1980, S. Barker, D. J. Williams, WAMA.

*Allotype.* ♀, Tallering Stn, Pindar, W.A., 28.ix.1980, S. Barker, D. J. Williams, WAMA.

*Paratypes.* W.A.: 2 ♂♂, 1 ♀, same data as holotype, SAMA; 2 ♂♂, 1 ♀, same data as allotype, SAMA; 1 ♂, 1 ♀, Shark Bay, 20.ix.1969, F. H. Uther Baker, SAMA; 1 ♀, Mt Magnet, 20.viii.1967, F. H. Uther Baker, SAMA; 1 ♀, E Murchison, Mansbridge, SAMA; 2 ♂♂, 3 ♀♀,

Mary Springs, 8.ix.1970, K. & E. Carnaby, SAMA; 1 ♂, 10 km W Gascoyne Jct, 22.ix.1980, D. J. Williams, S. Barker, SAMA; 1 ♂, 1 ♀, Marloo Stn, Wurruga, 1931-1941, A. Gaerling, ANIC; 2 ♂♂, Cuo, H. W. Brown, NMVA; 1 ♂, 1 ♀, Yampire Gorge, Hamersley Range, 26.viii.1967, F. H. Uther Baker, SAMA.

**Colour.** Head, antennae, pronotum and scutellum dark blue, Undersurface blue. Elytra yellow with following black markings: narrow basal margin; pre-medial fascia not reaching margin extending anteriorly to humeral callus from the end, represented by three spots in a few specimens; broad post-medial fascia projecting anteriorly in middle of each side and along suture; mark covering whole apex. Legs: femora and tibia dark blue; tarsomeres blue-green. Hairs silver.

**Shape and sculpture.** Head closely punctured, shallow median sulcus, very short muzzle, eyes bulbous. Antennae compressed; segments 1-3 obconic; 4-11 toothed. Pronotum shallowly punctured, glabrous, small basal fovea; apical margin projecting in middle, basal margin barely bisinuate; laterally parallel-sided at base, rounded to widest part after middle, rounded to apex. Scutellum scutiform, glabrous, excavate along anterior margin. Elytra punctate-striate, intervals flat, shallowly punctured; laterally angled out from base, rounded at humeral callus, concave then rounded after middle, tapered to bispinose apex; long sharp marginal spine, small sharp sutural spine, margin rounded and deeply indented between spines, apices diverging, apical margin subserrate. Undersurface with shallow punctures, edges of abdominal segments glabrous, sparse hairs. S<sub>7</sub>: truncate in male; narrowly truncate in female.

**Size.** Males,  $9.2 \pm 0.16 \times 3.1 \pm 0.06$  mm (13). Females,  $10.1 \pm 0.15 \times 3.4 \pm 0.07$  mm (11).

**Male genitalia.** (Fig. 3I). Parameres slightly angled outwards from basal piece, becoming parallel-sided after middle, then rounded and narrowed to apices. Median lobe pointed, sides acutely angled away. Apophysis of basal piece narrowed from base, rounded out at apex, medium width. Parameres in *S. atricollis* Saunders (Fig. 3J) angle outwards from basal piece more or less continuously, rounding off just before apex. Median lobe pointed, sharp, sides angled away. Apophysis of basal piece medium width.

**Distribution.** W.A.: Shark Bay, Murchison and Mullewa districts.

**Remarks.** Belongs in *S. atricollis* Saunders species group but is a smaller species than *S. atricollis* and has sharper elytral spines. The specific name is derived from *cracens* L: slender.

***Stigmodera (Castiarina) hilleri* sp. nov.**

FIGS 3K, 6J

**Holotype.** ♂, Mt Glorious, Qld, 10.i.1984, A. Hiller, QMBA.

**Allotype.** ♀, Mt Glorious, Qld, 27.xii.1983, A. Hiller, QMBA.

**Paratypes.** Qld: 1 ♂, same data as allotype, SAMA; 7 ♂♂, 11 ♀♀, Mt Glorious, 16.xii.1983, A. Hiller, AHQA; 3 ♂♂, 1 ♀, Mt Glorious, 30.xi.1980, A. Hiller, AHQA & SAMA; 1 ♂, Mt Glorious, 12.xii.1983, A. Hiller, AHQA.

**Colour.** Head green with yellow reflections. Antennae blue-green. Pronotum, scutellum and undersurface green with yellow reflections. Elytra yellow with following dark green markings with yellow reflections down suture only: narrow basal margin; broad pre-medial fascia reaching margin; broad post-medial fascia reaching margin; spade-shaped pre-apical mark reaching margin enclosing yellow spot on each side between it and post-medial fascia, all marks connected down suture to apex. Legs blue-green. Hairs silver.

**Shape and sculpture.** Head closely punctured, broad median sulcus, short muzzle. Antennae segments 1-3 obconic; 4-11 toothed. Pronotum closely punctured, basal fovea extending forwards to apical margin as glabrous line; apical margin projecting broadly in middle, basal margin bisinuate; laterally rounded from base, widest before middle, rounded to apex. Scutellum scutiform, few punctures, glabrous, flat. Elytra punctate-striate, intervals convex, punctured and wrinkled; laterally angled out from base, rounded at humeral callus, concave, rounded after middle and narrowed to bispinose apex; marginal spine blunt, very small sutural spine, margin indented between spines, apices diverging. Undersurface with shallow punctures, edges of abdominal segments glabrous, moderately hairy, hairs medium length. S<sub>7</sub>: truncate in male; indented in middle in female.

**Size.** Males,  $9.7 \pm 0.20 \times 3.4 \pm 0.06$  mm (13). Females,  $10.0 \pm 0.28 \times 3.6 \pm 0.11$  mm (13).

**Male genitalia.** (Fig. 3K). Parameres angled outwards from basal piece, rounded before middle to widest part after middle, rounded and narrowed to apices. Median lobe very wide, pointed but blunt, sides obtusely angled away. Apophysis of basal piece medium width.

**Distribution.** Qld: Mt Glorious.

**Remarks.** Collected from *Barklya* flowers on the edge of rain forest. I am unable to associate this species with any other on the basis of male genitalia and external morphology. Named after Mr A. Hiller, Mt Glorious, Qld.

*Stigmodera (Castiarina) fusca* sp. nov.  
FIGS 3L, 7I

*Holotype*. ♂, N.Q., Dodd, NMVA.

*Allotype*. ♀, Atherion, N.S.W. (sic), French coll., NMVA.

*Paratypes*. Qld: 1 ♂, Kuranda, N.S.W. (sic) Jan. 1905, E. P. Dodd, SAMA. N.S.W.: 1 ♀, Tweed River, 18.xii.1923, C. M. Deuquet, RMBB.

*Colour*. Head, antennae, undersurface green. Pronotum green along apical margin and at sides, black in middle. Elytra basal colour yellow with the following black markings: broad basal margin; pre-medial fascia; post-medial fascia; pre-apical mark covering apex. All these marks have coalesced at the sides leaving the following: basal yellow spot on each side and one at middle; red spot on lateral margin at humeral callus and one on the lateral margin in the pre-apical area. Legs: green on ventral surface, blue-green on dorsal surface of femur, tibia; tarsomeres blue-green. Hairs silver.

*Shape and sculpture*. Head with shallow punctures, thin median sulcus, muzzle short. Antennae: segments 1-4 obconic; 5-11 toothed. Pronotum with shallow punctures, glabrous, basal fovea and basal notches closer to margin than middle; projecting forwards broadly in middle of apical margin, basal margin bisinuate; laterally parallel-sided at base, rounded before middle and tapered to apex. Scutellum scutiform, flat without punctures. Elytra punctate-striate, intervals without punctures, glabrous, convex at base and apex, flat in middle; laterally angled out from base, rounded at humeral callus (widest part), concave, rounded after middle and tapered to bispinose apex; spines equal length, interval between straight. Undersurface with shallow punctures, edges of abdominal segments glabrous, few short hairs.  $S_7$ : truncate in both sexes. Legs: in male 2nd and 3rd with tarsal pads absent on tarsomeres 1, 2, 3, replaced by blunt median spine.

*Size*. Males, 11.0 × 4.3 mm (2). Females, 13.7 × 4.8 mm (2).

*Male genitalia*. (Fig. 3L). Parameres parallel-sided at basal piece, slightly angled outwards before middle, rounded to widest part, narrowed to the apices. Median lobe pointed and sharp, sides angled away. Apophysis of basal piece medium width.

*Distribution*. Northern N.S.W. and Qld.

*Remarks*. Member of *S. prochueta* Saunders nursery group on basis of colour and pattern. I am unable to group *S. fusca* with any other species on basis of external morphology or structure of the male genitalia. The specific name is derived from *fuscus* L. dark.

*Stigmodera (Castiarina) warningensis* sp. nov.  
FIGS 3M, 4F

*Holotype*. ♂, Mt Warning, N.S.W., 8.xii.1979, T. M. S. Hanlon, SAMA 1 2117L.

*Paratype*. 1 ♂, Mt Glorious, Qld, 10.i.1984, A. Hiller, AHQA.

*Colour*. Head black with blue reflections on muzzle. Antennae: segment 1 blue; segments 2-11 bronze-green. Pronotum and scutellum black. Undersurface and legs black with blue reflections. Elytra bright yellow with following black markings: narrow basal margin; mark down suture; mark covering apex. Hairs silver.

*Shape and sculpture*. Head closely punctured, broad median sulcus, short muzzle. Antennae: segments 1-4 obconic; 5- toothed. Pronotum closely punctured, basal fovea extending forwards to near apical margin as impressed line, basal notches on each side closer to margin than middle; apical margin projecting in middle; basal margin bisinuate; laterally angled inwards from base, rounded to widest part before middle, rounded and narrowed to apex. Scutellum cordiform, punctured, excavate. Elytra costate, scutellary, 3rd, 5th and 7th intervals slightly raised, other intervals flat, all punctured; laterally angled out from base, rounded at humeral callus, concave, rounded after middle and narrowed to bispinose apex; small, sharp marginal spine, minute sutural spine, margin indented but straight between spines, apices diverging. Undersurface shallow punctures, hairy, hairs short. Legs: in male 2nd and 3rd with tarsal pads replaced on tarsomeres 1-3 by elongate median ridge.  $S_7$ : truncate in male; female unknown.

*Size*. Males, 13.7 × 4.9 mm (2).

*Male genitalia*. (Fig. 3M). Large, wedge-shaped, median lobe pointed, sides rounded away. Similar to *S. tigris* Barker (1983, Fig. 1P) except median lobe of *S. tigris* pointed and sharp, sides angled away not rounded.

*Distribution*. High altitude rain forest in northern N.S.W. and southern Qld.

*Remarks*. Member of the *S. sexplagiata* Gory species group. Closest to *S. tigris*, differs from that species in pattern, shape, size and shape of elytral spines. The specific name is derived from the type locality.

*Stigmodera (Castiarina) turbulenta* sp. nov.  
FIGS 3N, 4B

*Holotype*. ♂, Boxwood Hill, W.A., 16.xi.1980, T. M. S. Hanlon, WAMA.

*Allotype*. ♀, 3.5–5.5 km S Yellowdine, W.A., 27.x.1978, *T. F. Houston*, WAMA.

*Paratypes*, W.A.: 1 ♂, Dedari, 2.x.1977, *D. Knowles*, MPWA; 1 ♂, 1 ♀, 55 km E Hyden, 17.x.1981, *M. Powell*, MPWA; 1 ♂, same data as holotype, MPWA; 1 ♂, Jerramungup, 16.xi.1980, *T. M. S. Hanton*, MPWA; 1 ♂, E Hyden, 19.i.1973, *K. & E. Carnaby*, SAMA; 1 ♂, McDermid Rock, 90 km W Norseman, Oct.1978, *G. Harold*, WAMA; 1 ♀, Tarin Rock, WAMA 48-2728; 1 ♀, Kukurin, WAMA 48-2981; 1 ♀, Reserve 16 km SSE Merredin, 29.x.1978, *T. F. Houston*, WAMA; 1 ♀, 2 km WNW Wodburnup Hill, 29/30.xi.1979, *T. E. Houston*, WAMA; 1 ♂, Yellowdine, 21.x.1980, *R. P. McMillan*, WAMA; 3 ♂♂, 1 ♀, Lake Grace, *H. W. Brown*, NMVA; 1 ♀, Kalgoorlie, *H. W. Brown*, RMBB; 3 ♀♀, Murchison, *H. W. Brown*, RMBB; 2 ♀♀, Australia, Deuquet Collection, RMBB; 2 ♀♀, Albany, *Brewer*, BMNH.

*Colour*. Head bronze-green with blue muzzle. Antennae bronze-green. Pronotum dark blue in middle, bronze-green at sides. Scutellum dark blue. Elytra red with following dark blue markings: narrow basal margin, pre-medial fascia concave anteriorly, not reaching margin; post-medial fascia reaching margin; mark covering apex, last two marks connected down suture, fascia not connected. Undersurface dull blue-green. Legs: femora and tibia blue-green; tarsomeres green. Hairs silver.

*Shape and sculpture*. Head closely punctured, shallow median sulcus, short muzzle. Antennae: segments 1–4 obconic, 5–11 toothed. Pronotum closely punctured, small basal fovea extending forwards to middle as glabrous impressed line; apical margin straight, basal margin bisinuate; laterally parallel-sided at base, rounded from base, widest part before middle, narrowed to apex. Scutellum cordiform, punctured, excavate. Elytra punctate-striate, intervals convex punctured and wrinkled; laterally angled out from base, rounded at humeral callus, concave, rounded after middle, narrowed to bispinose apex; prominent sharp marginal spine, small sharp sutural spine, margin rounded and indented between spines, apices hardly diverging, apical margin rough. Undersurface with narrow punctures, hairy, hairs medium length.  $S_7$ : truncate in both sexes. Legs: in male 2nd and 3rd with tarsal pads missing on tarsomeres 1–3, replaced by double median spine.

*Size*. Males,  $10.1 \pm 0.21 \times 3.8 \pm 0.07$  mm (10). Females,  $10.7 \pm 0.27 \times 4.1 \pm 0.10$  mm (16).

*Male genitalia*. (Fig. 3N). Wedge-shaped, median lobe pointed, sides rounded away.

*Distribution*, W.A.: Murchison, Goldfields and Great Southern districts.

*Remarks*. Member of the *S. sexplagiata* Gory species group. Closest to *S. cornishi* Barker (1983, Fig. 1R), but differs in shape, colour and size. The specific name is derived from *turbulentus* L. agitated.

*Stigmodera (Castiarina) dessarti* sp. nov.

FIGS 3O, 7F

*Holotype*: ♂, W.A., C. Deuquet collection, RMBB.

*Paratypes* W.A.: 3 ♂♂, same data as holotype, RMBB & SAMA. 1 ♂, 32 km E Southern Cross, 8.x.1978, *D. Knowles*, MPWA; 1 ♂, 35 km E Jerramungup, 3.x.1979, *M. Powell*, *M. Golding*, MPWA; 1 ♂, 55 km E Hyden, 17.x.1981, *M. Powell*, MPWA.

*Colour*. Head bronze with blue-green reflections. Antennae: segments 1–2 blue-green; 3–11 bronze. Pronotum bronze. Scutellum and undersurface dark blue. Elytra red with following dark blue markings: narrow basal margin; pre-medial fascia not reaching margin, expanded anteriorly at ends, the first two marks connected down suture; post-medial fascia reaching margin; mark covering apex and spines, the last two marks connected down suture. Legs: femora and tibia dark blue; tarsomeres blue-green. Hairs silver.

*Shape and sculpture*. Head closely punctured, broad median sulcus, short muzzle. Antennae: segments 1–3 obconic; 4–11 toothed. Pronotum closely punctured, basal fovea extending forwards to middle as glabrous line, basal notches represented by glabrous area on each side closer to margin than middle; apical margin slightly projecting in middle, basal margin bisinuate; laterally parallel-sided at base, rounded before middle, rounded and narrowed to apex. Scutellum scutiform, without punctures, glabrous, excavate. Elytra punctate-striate, intervals convex, punctured; laterally angled out from base, rounded at humeral callus, concave, rounded after middle and narrowed to bispinose apex; marginal spine slightly larger than sutural spine, margin straight between spines, apices diverging. Undersurface with shallow punctures, edges of abdominal segments glabrous, moderately hairy, hairs medium length.  $S_7$ : truncate in male; female unknown.

*Size*. Males,  $10.5 \pm 0.25 \times 4.2 \pm 0.13$  mm (7).

*Male genitalia*. (Fig. 3O). Parameres angled outwards from basal piece to widest part after middle, rounded and tapered to apex. Median lobe pointed and sharp, acutely angled away at sides. Apophysis of basal piece medium width. Aedaeus of *S. delectabilis* Hope (Fig. 3R) longer. Parameres parallel-sided at basal piece, angled outwards before middle, rounded at widest part after middle and

tapered to apices. Median lobe pointed, acutely angled away at sides. Apophysis of basal piece wide and elongate.

*Distribution.* W.A.: Great Southern district.

*Remarks.* Member of the *S. delectabilis* (Fig. 7E) species group. Smallest species in the group and the only one occurring in W.A. Named after Dr P. Dessart, RMBB.

*Stigmodera (Castiarina) pulla* sp. nov.  
FIGS 3S, 7H

*Holotype.* ♂, Illawarra Coastal Range, 23.xii.1952, C. Deuquet, QMBA.

*Allotype.* ♀, Illawarra Coastal Range, 15.xii.1948, C. Deuquet, SAMA I 21172.

*Paratypes.* N.S.W.: 2 ♂♂, Waterfall, Schroeder, ASSA; 1 ♂, Illawarra, 16.xii.1950, C. Deuquet, SAMA; 1 ♀, Mt Keira, 15.xii.1957, J. Balderson, SAMA; 14 ♂♂, 6 ♀♀, Illawarra, C. Deuquet, RMBB; 1 ♀, Jamberoo, 30.xii.1954, C. Deuquet, RMBB; 1 ♂, St Albans, Nov., C. Deuquet, RMBB.

*Colour.* Head, antennae, scutellum and under-surface green. Pronotum bronze in middle, green at sides. Elytra yellow with following variable black markings: narrow basal margin; broad pre-medial fascia reaching margin; broad post-medial fascia reaching margin; spade-shaped mark covering pre-apex and apical areas, ends of the fascia all coalesce along margin; elongate red mark on margin at humeral callus and apex; basal yellow mark and medial yellow mark and yellow pre-apical fascia may be variably obscured by black. Legs: femora and tibiae dorsal surface blue-green, ventral surface green; tarsomeres green. Hairs silver.

*Shape and sculpture.* Head shallowly punctured, glabrous, broad median sulcus, short muzzle. Antennae: segments 1-3 obconic; 4-11 toothed. Pronotum shallowly punctured, glabrous, basal fovea, basal notches on each side closer to margin than middle; apical margin straight, basal margin bisinuate; laterally parallel-sided at base, rounded before middle and narrowed to apex. Scutellum scutiform, few punctures, glabrous, excavate, Elytra punctate-striate, intervals convex, lightly punctured, lateral margin turned outwards; laterally angled out from base, rounded at humeral callus, concave, rounded after middle and narrowed to bispinose apex; both spines broad and sharp, margin rounded between spines, apices hardly diverging. Undersurface with shallow punctures, sparsely covered with medium length hair; mesosternal process slightly inflated. S<sub>7</sub>: truncate in both sexes.

*Size.* Males, 11.5 ± 0.20 × 4.6 ± 0.07 mm (19). Females, 13.9 ± 0.27 × 5.6 ± 0.15 mm (9).

*Male genitalia.* (Fig. 3S). Aedeagus shorter than in *S. delectabilis* Hope. Parameres parallel-sided at basal piece, angled outwards before middle, rounded at widest part after middle, tapered to apices. Median lobe broader than in *S. delectabilis*, pointed, obtusely angled away at sides. Apophysis of basal piece medium width and narrowed towards apex.

*Distribution.* N.S.W.: Northern, east of Dividing Range.

*Remarks.* Member of the *S. delectabilis* Hope group on basis of male genitalia and external morphology. Member of the *S. producta* Saunders mimicry group on the basis of colour and pattern. Only species belonging to both groups. The specific name is derived from *pullus* L., dark coloured.

*Stigmodera (Castiarina) lukini* sp. nov.  
FIGS 3T, 7K

*Stigmodera bucolica* (Barker, 1980: 2) *nec* Kerremans 1898

*Holotype.* ♂, 21 km W Port Lincoln, S. Aust., 16.xi.1974. S. Barker, SAMA I 21173.

*Allotype.* ♀, same data as holotype, SAMA I 21174.

*Paratypes.* S. Aust.: 5 ♂♂, 3 ♀♀, same data as holotype, SAMA; 1 ♂, 2 ♀♀, SAMA; 1 ♀, Port Lincoln, xi-1872, SAMA; 1 ♀, Port Lincoln, Oct.1909, SAMA; 1 ♀, Saunders coll., BMNH; 1 ♀, Port Lincoln, Blackburn, BMNH.

*Colour.* Head, antennae, scutellum green or blue-green. Pronotum green, bronze or purple-bronze in centre, green with yellow reflections at the sides. Elytra orange with following dark blue-green markings: narrow basal margin; pre-medial fascia, not reaching margin, projecting anteriorly from end of anterior margin; post-medial fascia reaching margin projecting anteriorly in middle of each elytron and at suture, projecting posteriorly on suture; pre-apical spade-shaped mark covering apex and spines, last two connected down suture. Undersurface and legs green with yellow reflections. Hairs silver.

*Shape and sculpture.* Head closely punctured, shallow median sulcus, muzzle very short. Antennae compressed; segments 1-3 obconic; 4-11 toothed. Pronotum closely punctured, very small basal fovea extending forwards to middle as glabrous line; projecting forwards in middle of apical margin, basal margin barely bisinuate; laterally rounded from base, widest before middle, rounded and narrowed to apex. Scutellum scutiform with few punctures, slightly concave. Elytra punctate-striate, intervals flat in middle, convex at apex and sides, punctured; laterally angled out from base, rounded



at humeral callus, concave, rounded after middle to bispinose apex; marginal spines small, sutural minute, margin rounded and indented between spines, apices slightly diverging, apical margin sub-serrate. Undersurface with shallow punctures, sparse long hair.  $S_7$ : turned under and faintly bilobed in both sexes.

*Size.* Males,  $13.8 \pm 0.21 \times 5.1 \pm 0.09$  mm (7). Females,  $13.7 \pm 0.25 \times 5.4 \pm 0.12$  mm (10).

*Male genitalia.* (Fig. 3T). Parameres angled slightly outwards from base, rounded and widened before middle, parallel-sided after middle, rounded abruptly to apex. Median lobe pointed, sides angled away. Apophysis of basal piece narrowed in middle, but rounded to medium width at apex. Parameres in *S. trifasciata* C & G (Fig. 3U) are parallel-sided from basal piece then slightly angled outwards, rounded outwards before middle to widest part after middle, tapered inwards then abruptly rounded and angled inwards at apex. Median lobe bluntly pointed, sides angled away. Apophysis of basal piece medium width.

*Distribution.* S. Aust.: Southern Eyre Peninsula.

*Remarks.* The specimens collected in 1974 were taken on flowers of *Baeckea* sp. Belongs in the *S. trifasciata* species group. Colour, body shape and male genitalia of *S. bucolica* (Barker, 1983, figs. 3A, 6F) are quite distinct from those of *S. lukini*. Named after Mr Dean Lukin, Olympian, Port Lincoln.

*Stigmodera (Castiarina) coolsi* sp. nov.

FIGS 3V, 7L

*Holotype.* ♂, Burracoppin, W.A., 10.x.1936, H. W. Brown, RMBB.

*Paratypes.* W.A.: 2 ♂♂, same data as holotype, RMBB & SAMA.

*Colour.* Head black with blue reflections. Antennae: segments 1-2 blue-green; 2-II bronze-green. Pronotum black in middle, dark blue at sides. Scutellum black with green reflections. Undersurface grey-blue. Legs: femora and tibia blue; tarsomeres blue-green. Elytra orange brown with the following markings with blue reflections: narrow basal margin; broad pre-medial fascia, not reaching margin, projecting anteriorly and posteriorly at ends; broad post-medial fascia reaching margin, projecting anteriorly in middle of anterior margin and posteriorly in middle of posterior margin; mark covering apex; the fascia and the apical mark connected down suture. Hairs silver.

*Shape and sculpture.* Head closely punctured, median sulcus, very short muzzle. Antennae: compressed, segments 1-3 obconic; 4-II toothed.

Pronotum closely punctured, minute basal fovea extending forwards to apical margin as impressed line, basal notches represented by glabrous area on each side closer to margin than middle; apical margin projecting in middle, basal margin barely bisinuate; laterally rounded from base to widest part before middle, rounded and narrowed to apex. Scutellum sculiform, glabrous, excavate. Elytra punctate-striate, intervals convex, punctured and wrinkled; laterally angled out from base, rounded at humeral callus, concave, rounded after middle, tapered to spineless apex; margin indented and straight in spinal area; apices hardly diverging. Undersurface with shallow punctures, edges of abdominal segments glabrous, moderately hairy, hairs medium length.  $S_7$ : truncate in male; female unknown.

*Size.* Males,  $14.1 \times 5.4$  mm (3).

*Male genitalia.* (Fig. 3V). Parameres slightly angled outwards from basal piece, rounded before middle, parallel-sided, slightly rounded outwards to widest part, abruptly rounded and narrowed to apices. Median lobe pointed and sharp, sides obtusely angled away. Apophysis of basal piece medium width. Parameres in *S. browni* Carter (Fig. 3W) slightly angled outwards from basal piece to widest part after middle, rounded and narrowed to apices. Median lobe pointed and sharp, sides obtusely angled away. Apophysis of basal piece broad.

*Distribution.* W.A.: Burracoppin.

*Remarks.* Member of *S. trifasciata* C & G species group on basis of external morphology and male genitalia. Closest to *S. browni* Carter but that species has a bispinose apex. The elytral markings differ from all known species. Named after Monsieur Jacques Cools, RMBB.

*Stigmodera (Castiarina) viridolinea* sp. nov.

FIGS II, 5E

*Stigmodera guttata* var. *minor* Carter 1929 (nomen nudum).

*Holotype.* ♂, Inglewood, Vic., 22.xii.1923, C. Oke, NMVA.

*Allotype.* ♀, same data as holotype, NMVA.

*Paratypes.* Vic.: 2 ♀♀ same data as holotype, NMVA; 11 ♂♂, 4 ♀♀, Inglewood, 30.xi.1915, NMVA; 2 ♂♂, 1 ♀, Inglewood, 14.xii.1916, NMVA; 23 ♂♂, 14 ♀♀, Inglewood, Dec.1915/4.i.1916, J. E. Dixon, NMVA; 3 ♂♂, 2 ♀♀, Inglewood, Jan.1917/12.ii.1917, J. E. Dixon, NMVA; 1 ♂, Inglewood, 13.xii.1920, J. E. Dixon, NMVA; 1 ♂, 3 ♀♀, Inglewood, 22.xii.1923, C. Oke, NMVA; 7 ♂♂, 5 ♀♀, Inglewood, 27.xi.1945, E. Smith, NMVA; 2 ♂♂, 3 ♀♀, Inglewood,

NMVA; 4 ♂♂, 7 ♀♀, Sea Lake, Nov.1916, *Goudie*, NMVA, SAMA; 1 ♀, Sea Lake, NMVA; 2 ♂♂, 2 ♀♀, Lake Hattah, *J. E. Dixon*, NMVA; 2 ♂♂, 2 ♀♀, Lake Hattah, 4 & 18.x.1953, *J. Plant*, NMVA; 1 ♂, Birchip, 1903, NMVA; 1 ♀, Mallee, NMVA; 1 ♂, Ouyen, Dec.1912, NMVA; 2 ♂♂, 3 ♀♀, NMVA. S. Aust.: 1 ♀, Lyndoch, 31.xii.1885, *Dr L. Kidder*, SAMA; 1 ♀, Reed Beds, 12.i.1911, *S. A. White*, SAMA; 1 ♂, Gawler, 9.i.1913, SAMA; 1 ♀, Ardrossan, *J. G. O. Tepper*, SAMA; 1 ♀, Lyndoch, *Blackburn*, SAMA; 1 ♀, Yorke Valley, *Blackburn*, SAMA; 1 ♂, Wirrabarra, Nov., *C. H. Curnow*, SAMA; 1 ♂, Alligator Gorge, 8.viii.1972, *S. Barker*, SAMA; 1 ♂, Sellicks Scrub, 4.xi.1978, *S. Barker*, SAMA; 1 ♀, Halycon Scrub, Black Hill, 2.xii.1984, *J. & D. Gardner*, *S. Barker*, JGAA; 1 ♂, SAMA, Aust.: 4 ♂♂, 5 ♀♀, SAMA.

**Colour.** Head, antennae, pronotum, scutellum, sternum and legs green with yellow reflections or all coppery. Abdomen testaceous in both sexes with green or coppery reflections. Elytra yellow with following dark green markings: anterior margin; mark down suture covering apices in some but not in others; with or without a post medial spot on each elytron in 7th and 8th interval from suture. Hairs silver.

**Shape and structure.** Head with close shallow punctures, broad median sulcus, short muzzle. Antennae: segments 1-3 obconic; 4-11 toothed. Pronotum closely punctured, small basal fovea in female, in male extending forwards to apical margin as glabrous line, basal notches well marked in male surrounded by glabrous area, obscure in female; projecting forwards in middle of apical margin, basal margin barely bisinuate; laterally angled outwards at base, rounded and bulbous before middle, rounded and narrowed to apex. Scutellum scutiform, few punctures, flat. Elytra punctate-striate, intervals convex, more so at margin and apex than middle, lightly punctured in middle, heavily punctured at sides; laterally parallel-sided at base, slightly angled outwards then rounded at humeral callus, concave then rounded after middle and narrowed to bispinose apex; both spines minute, margin angled and indented between. Undersurface shallowly punctured, edges of abdominal segments glabrous, moderately hairy, hairs short. S<sub>7</sub>: narrowly truncate in male; rounded and slightly pointed in female.

**Size.** Males,  $13.7 \pm 0.09 \times 5.2 \pm 0.04$  mm (72). Females,  $14.8 \pm 0.17 \times 5.7 \pm 0.06$  mm (62).

**Male genitalia.** (Fig. 1T). Parameres parallel-sided from basal piece, rounded outwards before middle to widest part after middle, slightly angled inwards, rounded off to narrow apices. Median lobe pointed and sharp, sides obtusely angled away. Apophysis

of basal piece short and medium width. Parameres in *S. subtinctoria* Carter (Fig. 1U) parallel-sided from basal piece, slightly angled inwards, rounded before middle, angled outwards to widest part after middle, rounded to apices. Median lobe sharp and pointed, sides obtusely angled away. Apophysis of basal piece medium width.

**Distribution.** Vic.: Mallee district. S. Aust.: Adelaide Plains, Yorke Peninsula, Southern Flinders Ranges, Murray mallee.

**Remarks.** Member of *S. straminea* Saunders species group on basis of testaceous abdomen and structure of male genitalia. Closest in appearance to *S. subtinctoria* but females of that species have all green abdomens and males mostly green with the terminal segments only testaceous. In *S. viridolinea* both sexes have testaceous abdomens and a green line down the suture. Specific name is derived from *virido* L. green, *linea* L. line.

*Stigmodera (Castiarina) burnsi* sp. nov.

FIGS 1W, 5F

**Holotype.** ♂, Big Desert, Vic., 6.xi.1978, *G. Burns*, NMVA.

**Allotype.** ♀, Sea Lake, Vic., *Goudie*, SAMA 1 21175.

**Paratypes.** Vic.: 3 ♂♂, 3 ♀♀, Mallee, Deuquet collection, RMBB; 4 ♀♀, Sea Lake, Nov.1916, *Goudie*, NMVA & SAMA; 4 ♂♂, Mallee, *T. Dixon*, NMVA; 5 ♂♂, 2 ♀♀, Hattah, Oct.1915, 19, 21.x.1916, NMVA; 1 ♀, Ultima, Nov.1917, *Goudie*, SAMA; 1 ♀, Gypsum, Nov.1924, *C. Oke*, NMVA; 4 ♂♂, 1 ♀, Hattah, 4, 25.x.1953, *J. Plant*, NMVA; 2 ♂♂, Hattah, Sep.1940, *F. E. Wilson*, NMVA; 1 ♀, Mallee, SAMA. S. Aust.: 1 ♀, Halycon Scrub, Black Hill, 2.xii.1984, *J. & D. Gardner*, *S. Barker*, JGAA; 1 ♂, 1 ♀, Deuquet collection, RMBB; 2 ♂♂, 1 ♀, Sharp collection; BMNH; 1 ♂, 1 ♀, Gawler, Pascoe collection, BMNH; 1 ♀, Murray Bridge, 10.Dec., Griffith collection, SAMA; 1 ♂, Adelaide, RMBB. Aust.: 3 ♂♂, 1 ♀, Rosenberg & Weyers collections, RMBB.

**Colour.** Head bright green. Antennae: segments 1-2 green; 3-11 gold and green. Pronotum bright green with or without gold reflections. Scutellum bright green with gold reflections. Elytra yellow with following blue markings: narrow basal margin; short vitta on each humeral callus; narrow post-medial fascia, convex anteriorly, concave posteriorly, not reaching margin; spade-shaped pre-apical mark often reduced and projecting down suture to cover apex, all marks connected along suture. Undersurface: sternum and base of

abdomen green; apical abdominal segments testaceous. Legs green. Hairs silver.

*Shape and sculpture.* Head closely punctured, broad median sulcus, short muzzle. Antennae: segments 1-3 obconic; 4-11 toothed. Pronotum closely punctured, very small basal fovea, small basal notches closer to margin than middle; apical margin projecting in middle, basal margin barely bisinuate; laterally parallel-sided at base then rounded to widest part before middle, rounded and tapered to apex. Scutellum scutiform, glabrous, flat. Elytra punctate-striate, intervals convex and wrinkled; laterally angled out from base, rounded at humeral callus, concave, rounded after middle, tapered to bispinose apex; both spines small and blunt, margin rounded and indented between spines, apices diverging. Undersurface with shallow punctures, edges of abdominal segments glabrous, moderately hairy, hairs short.  $S_7$ : truncate in male; rounded in female.

*Size.* Males,  $14.9 \pm 0.23 \times 5.7 \pm 0.08$  mm (27). Females,  $15.7 \pm 0.27 \times 6.0 \pm 0.10$  mm (20).

*Male genitalia.* (Fig. 1W). Parameres slightly angled outwards from basal piece, rounded before middle to widest part after middle, angled inwards and rounded to apices. Median lobe pointed, sides abruptly angled away. Apophysis of basal piece medium width.

*Distribution.* Vic.: Mallee, Big and Little Deserts, S. Aust.; Gawler, Murray mallee.

*Remarks.* Member of the *S. straminea* Saunders species group on basis of external morphology, testaceous abdomen and structure of male genitalia. The elytral markings are distinct from other members of the group. Named after Mr G. Burns, Mornington, Victoria.

*Stigmodera (Castiarina) discolorata* sp. nov.

FIGS 3X, 7D

*Holotype.* ♂, Boxwood Hill, SE Ongerup, W.A., 6/7.xi.1980, K. & E. Carnaby, WAMA.

*Allotype.* ♀, Hammersley River crossing, 26.xi.1979, T. F. Houston, A. Chapman, WAMA.

*Paratypes.* W.A.: 1 ♂, 1 ♀, Warren River, 10 km SE Pemberton, 17.i.1971, G. A. Holloway, H. Hughes, AMSA; 1 ♀, same data as holotype, SAMA; 1 ♀, 64 km NE Esperance, 18.x.1982, S. Barker, P. Kempster, H. Vanderwoude, SAMA; 1 ♀, 55 km W Ravenshorpe, 15.xi.1980, T. M. S. Hanlon, MPWA.

*Colour.* Head, antennae, scutellum, undersurface and legs blue. Pronotum dark blue in middle, blue at sides. Elytra red with following dark blue

markings: narrow basal margin; pre-medial fascia extending anteriorly and posteriorly at ends, posterior projection sometimes reaching margin; post-medial fascia reaching margin; mark covering whole apex, all marks connected down suture. Hairs silver.

*Shape and sculpture.* Head closely punctured, median sulcus, short muzzle. Antennae: segments 1-4 obconic; 5-11 toothed. Pronotum closely punctured, basal fovea extending forwards to near apical margin as glabrous line; apical margin broadly projecting in middle, basal margin bisinuate; laterally parallel-sided at base, rounded to widest part before middle, rounded and narrowed to apex. Scutellum scutiform, few punctures, flat. Elytra punctate-striate, intervals convex, punctured; laterally angled out from base, rounded at humeral callus, concave, rounded after middle and narrowed to bispinose apex; small marginal spine, very small sharp sutural spine, margin rounded and indented between spines, apices hardly diverging. Undersurface shallow punctures, edges of abdominal segments glabrous, moderately hairy, hairs short.  $S_7$ : male truncate; female indented in middle.

*Size.* Males,  $9.6 \times 3.3$  mm (2). Females,  $8.9 \times 3.2$  mm (5).

*Male genitalia.* (Fig. 3X). Parameres slightly angled outwards from basal piece, rounded out before middle to widest part, faintly notched, parallel-sided until rounded and narrowed to apices. Median lobe pointed and sharp, sides angled away. Apophysis of basal piece broad. Parameres in *S. cruentata* (Kirby) (Fig. 3Y) parallel-sided from basal piece, rounded outwards before middle, distinctly notched at widest part after middle, angled slightly outwards, rounded abruptly at apices. Median lobe pointed but blunt, sides angled away then rounded. Apophysis of basal piece broad.

*Distribution.* This species belongs in the *S. cruentata* species group on the basis of structure of male genitalia and external morphology. It can be separated from other species in the group by the bicolorous pronotum and red elytra. The specific name is derived from *discolor* l. variegated.

The following species are placed by me in the subgenus *Stigmodera (Castiarina)* together with the indicated synonyms.

Genus *STIGMODERA* Eschscholtz 1829

Sub-genus *CASTIARINA* Castelnau & Gory 1837

*abdominalis* Saunders 1868, *J. Lin. Soc.* 9, 467

SA, V, Q, NSW;  
*acuminata* Kerremans 1898, *Annls Soc. ent. Belg.* 42, 142  
[o]. Q, NSW.

- acuta* Deuquet 1956, *Proc. Linn. Soc. N.S.W.* 81, 154 [o] NSW, Q.
- acuticeps* Saunders 1869, *Insect. Saund.* 3, 19 WA.
- odewahni* Obenberger 1928, *Arch. Naturgesch.* 1926, 92, 330
- acuticollis* Carter 1916, *Trans. R. Soc. S. Aust.* 40, 133 [o] Q.
- adamsi* Deuquet 1957, *Proc. Linn. Soc. N.S.W.* 82, 189 Q.
- adelaidae* Hope 1846, *Trans. ent. Soc. Lond.* 4, 212 [s] SA, V.
- aeneicornis* Saunders 1868, *J. Linn. Soc.* 9, 472 SA, V, NSW.
- laudabilis* Kerremans 1898, *Annls Soc. ent. Belg.* 42, 146
- aeraticollis* Carter 1930, *Proc. Linn. Soc. N.S.W.* 55, 182 [w] WA.
- affabilis* Kerremans 1898, *Annls Soc. ent. Belg.* 42, 141 [a] Q.
- simplex* Kerremans 1902, *Genera Insect.* 12, 210
- alexandri* Carter 1916, *Trans. R. Soc. S. Aust.* 40, 119 [i] WA.
- alternecosta* Thomson 1879, *Typ. Bupr. App.* 1a, 35 NSW, Q.
- alacris* Kerremans 1890, *Bull. Soc. ent. Belg.* 1890, 47
- dissecta* Kerremans 1890, *Bull. Soc. ent. Belg.* 1890, 48
- alternecostata* Kerremans 1892, *Mém. Soc. r. ent. Belg.* 1, 143
- quadrinotata* Blackburn 1892, *Trans. R. Soc. S. Aust.* 15, 49
- libens* Kerremans 1902, *Genera Insect.* 12, 209
- alternozona* Thomson 1878, *Typ. Bupr.* 54 [g] SA.
- amabilis* C & G 1837, *Mon. Bupr.* 2, 19 WA.
- amplipennis* Saunders 1868, *J. Linn. Soc.* 9, 480 [d] SA, V, NSW, Q.
- amplicollis* Carter 1931, *Aust. Zool.* 6, 107
- analis* Saunders 1869, *Insect. Saund.* 3, 7 Q.
- marginicervex* Thomson 1879, *Typ. Bupr. App.* 1a, 31
- anchoralis* C & G 1837, *Mon. Bupr.* 2, 26 WA.
- orbivifera* Blackburn 1892, *Trans. R. Soc. S. Aust.* 15, 51
- agnesis* Kerremans 1898, *Annls Soc. ent. Belg.* 42, 140
- intilla* Obenberger 1922, *Arch. Naturgesch.* 1922, 88, 116
- andersoni* C & G 1837, *Mon. Bupr.* 2, 25 V, NSW, Q.
- verax* Kerremans 1898, *Annls Soc. ent. Belg.* 42, 146
- dixei* Obenberger 1922, *Arch. Naturgesch.* 1922, 88, 119
- aquila* Barker 1980, *Trans. R. Soc. S. Aust.* 104, 5 [q] WA.
- argillacea* Carter 1916, *Trans. R. Soc. S. Aust.* 40, 126 [s] SA, V.
- ariel* Carter 1930, *Proc. Linn. Soc. N.S.W.* 55, 533 NSW.
- armata* Thomson 1879, *Typ. Bupr. App.* 1a, 31 NSW.
- theryi* Carter 1924, *Proc. Linn. Soc. N.S.W.* 49, 534
- aristrongi* Barker 1983, *Trans. R. Soc. S. Aust.* 107, 152 [l] SA, NSW, NT, Q.
- atherionensis* Barker 1986, *Trans. R. Soc. S. Aust.* 110, 12 [l] Q.
- atricollis* Saunders 1869, *Insect. Saund.* 3, 22 [u] SA.
- atricollis gowlerensis* Obenberger 1933, *Čas čsl. Spol. ent.* 30, 106
- atricollis moira* Obenberger 1933, *Čas čsl. Spol. ent.* 30, 106
- atrocoerulea* Kerremans 1890, *Bull. Soc. ent. Belg.* 1890, 47 [a] Aust.
- atrorata* Waterhouse 1874, *Trans. R. ent. Soc. Lond.* 1874, 542 Q.
- atenuata* Carter 1916, *Trans. R. Soc. S. Aust.* 40, 132 V.
- audax* Saunders 1869, *Insect. Saund.* 3, 5 [k] WA.
- aurantiaca* Carter 1931, *Aust. Zool.* 6, 346 WA, SA, V.
- aurea* Barker 1980, *Trans. R. Soc. S. Aust.* 104, 6 Q.
- aureola* Carter 1913, *Proc. Linn. Soc. N.S.W.* 37, 499 WA.
- australasiae* C & G 1837, *Mon. Bupr.* 2, 32 SA, V, T, NSW, Q.
- assimilis* Hope 1846, *Trans. ent. Soc. Lond.* 4, 212
- melbournensis* Thomson 1879, *Typ. Bupr. App.* 1a, 34
- umida* Kerremans 1898, *Annls Soc. ent. Belg.* 42, 147 n. syn.
- bakeri* Barker 1979, *Trans. R. Soc. S. Aust.* 103, 5 [w] WA.
- balteata* Saunders 1869, *Insect. Saund.* 3, 16 NSW, Q.
- postica* Thomson 1879, *Typ. Bupr. App.* 1a, 37
- balthasari* Obenberger 1928, *Arch. Naturgesch.* 1926, 92, 330 WA.
- baziliscia* Obenberger 1933, *Čas čsl. Spol. ent.* 30, 105 [B].
- bruncula* Carter 1936, *Proc. Linn. Soc. N.S.W.* 61, 100
- bella* Saunders 1871, *Cal. Bupr. Syn. Syst.*, 71 V, NSW, Q.
- eruentata* C & G 1837, *Mon. Bupr.* 2, 29
- bella dixonii* Carter 1926, *Proc. Linn. Soc. N.S.W.* 51, 57
- bicolor* C & G 1837, *Mon. Bupr.* 2, 39 [a] SA.
- aliceae* Barker 1980, *Trans. R. Soc. S. Aust.* 104, 6 n. syn.
- bifasciata* (Hope) 1831, *Gray's Zoologica Miscellany* 1, 25 V, NSW, Q.
- bicincta* (Boisduval) 1835, *Voyage de l'Astrolabe*, 89
- bicinctulata* C & G 1837, *Mon. Bupr.* 2, 30
- dejeani* Gory 1841, *Mon. Bupr.* 4, err. add.
- bicincta* Gory 1841, *Mon. Bupr.* 4, 131
- irispinosa* Kerremans 1890, *Bull. Soc. ent. Belg.* 1890, 43
- bicincta hina* Obenberger 1922, *Archiv. Naturg.* 1922, 115
- biguttata* Macleay 1863, *Trans. ent. Soc. N.S.W.* 1, 24 [f] Q.
- bimaculata* Saunders 1868, *J. Linn. Soc.* 9, 481 WA, Q.
- binotata* Saunders 1871, *Cal. Bupr. Syn. Syst.*, 72 [h] NSW, Q.
- bimaculata* Saunders 1869, *Insect. Saund.* 3, 7
- blackdownensis* Barker 1986, *Trans. R. Soc. S. Aust.* 110, 20 [n] Q.
- boldensis* Barker 1983, *Trans. R. Soc. S. Aust.* 107, 156 [w] WA.
- boonvia* Carter 1933, *Proc. Linn. Soc. N.S.W.* 58, 162 WA.
- booyania* Carter 1933, *Proc. Linn. Soc. N.S.W.* 58, 162 (Inadvert. error) Barker & Edward 1963, *West. Aust. Nat.* 8, 170
- borealis* Barker 1979, *Trans. R. Soc. S. Aust.* 103, 13 New Guinea.
- bremei* (Hope) 1845, *Trans. ent. Soc. Lond.* 4, 102 V, NSW.
- brooksi* Barker 1979, *Trans. R. Soc. S. Aust.* 103, 11 Q.
- broomensis* Carter 1934, *Proc. Linn. Soc. N.S.W.* 59, 253 [f] WA.
- browni* Carter 1916, *Trans. R. Soc. S. Aust.* 40, 121 [w] WA.
- browningi* Barker 1986, *Trans. R. Soc. S. Aust.* 110, 16 [p] WA.
- brutella* Thomson 1879, *Typ. Bupr. App.* 1a, 37 [d] NSW, Q.
- graphisura* Thomson 1879, *Typ. Bupr. App.* 1a, 37
- uniformis* Kerremans 1898, *Annls Soc. ent. Belg.* 42, 145
- vlevis* Obenberger 1922, *Arch. Naturgesch.* 1922, 88, 119
- bucolica* Kerremans 1898, *Annls Soc. ent. Belg.* 42, 152 [w] WA.

- kalbarri* Barker 1983, *Trans. R. Soc. S. Aust.* 107, 156 n.syn.
- burchelli* C & G 1837, *Mon. Bupr.* 2, 33 [r] NSW, Q.
- burnsi* Barker 1986, *Trans. R. Soc. S. Aust.* 110, 26 [j] SA, V.
- callubriensis* Carter 1931, *Aust. Zool.* 6, 367 V, NSW.
- campestris* Blackburn 1897, *Trans. R. Soc. S. Aust.* 21, 31 Q.
- deleta* Kerremans 1902, *Genera Insect.* 12, 208
- saundersiana* Obenberger 1922, *Arch. Naturgesch.* 1922, 88, 120
- capensis* Barker 1986, *Trans. R. Soc. S. Aust.* 110, 16 [c] Q.
- carinata* Macleay 1863, *Trans. ent. Soc. N.S.W.* 1, 26 [v] Q.
- opacula* Obenberger 1922, *Arch. Naturgesch.* 1922, 88, 121
- carminea* Saunders 1868, *J. Linn. Soc.* 9, 474 [d] SA, V, NSW.
- felix* Kerremans 1898, *Annls Soc. ent. Belg.* 42, 142
- carnabyi* Barker 1979, *Trans. R. Soc. S. Aust.* 103, 12 WA, V.
- castelnaudi* Saunders 1869, *Insect. Saund.* 3, 9 WA, SA, V.
- thomsoniana* Masters 1886, *Cat. Coleop.*, 97
- castelnaudi* Thomson 1878, *Typ. Bupr.*, 53
- laportei* Kerremans 1890, *Bull. Soc. ent. Belg.* 1890, 42
- castelnaudi nuius* Obenberger 1933, *Čas čl. Spol. ent.* 30, 104
- chinnoeki* Barker 1983, *Trans. R. Soc. S. Aust.* 107, 166 WA, SA.
- cincta* Blackburn 1890, *Trans. R. Soc. S. Aust.* 13, 157 [s] WA.
- rubrocincta* Kerremans 1890, *Bull. Soc. ent. Belg.* 1890, 46
- cincta tridens* Carter 1931, *Aust. Zool.* 6, 340
- cinnamomea* Macleay 1863, *Trans. ent. Soc. N.S.W.* 1, 25 [l] Q.
- clancula* Obenberger 1922, *Arch. Naturgesch.* 1922, 88, 117 WA, SA.
- coccinata* (Hope) 1845, *Trans. ent. Soc. Lond.* 4, 102 WA, Q.
- elegantula* White 1846, *Discoveries in Austr.*, J. Lort Stokes, 1, 507
- coeruleipes* Saunders 1869, *Insect. Saund.* 3, 13 NSW.
- coeruleipes montana* Carter 1916, *Trans. R. Soc. S. Aust.* 40, 106
- colligens* Kerremans 1890, *Bull. Soc. ent. Belg.* 1890, 44 [d] NSW.
- colorata* Hope 1847, *Trans. ent. Soc. Lond.* 4, 283 [r] SA.
- commixta* Carter 1924, *Proc. Linn. Soc. N.S.W.* 49, 21 [h] V, NSW.
- confusa* Waterhouse 1874, *Trans. R. ent. Soc. Lond.* 1874, 541 Q.
- apicenotata* Carter 1930, *Proc. Linn. Soc. N.S.W.* 55, 533
- convexa* Carter 1913, *Proc. Linn. Soc. N.S.W.* 37, 506 [m] WA.
- coolii* Barker 1986, *Trans. R. Soc. S. Aust.* 110, 25 [w] WA.
- cornishi* Barker 1983, *Trans. R. Soc. S. Aust.* 107, 144 [v] WA, SA.
- costalis* Saunders 1869, *Insect. Saund.* 3, 14 NSW.
- costata* Saunders 1868, *J. Linn. Soc.* 9, 470 NSW.
- costipennis* Saunders 1869, *Insect. Saund.* 3, 13 NSW.
- cruenta* Barker 1986, *Trans. R. Soc. S. Aust.* 110, 20 [i] WA.
- crenata* (Donovan) 1805, *Epitome Insects New Holland*, pl. 7, fig. 3 WA, SA, V, T, NSW, Q.
- amphicroa* (Boisduval) 1835, *Voyage de l'Aströblöbe*, 90
- sexspilota* C & G 1837, *Mon. Bupr.* 2, 35
- amphicroa allecto* Obenberger 1933, *Čas čl. Spol. ent.* 30, 105
- amphicroa euterpe* Obenberger 1933, *Čas čl. Spol. ent.* 30, 105
- crocicolor* C & G 1837, *Mon. Bupr.* 2, 44 WA.
- consanguinea* Saunders 1868, *Trans. R. ent. Soc. Lond.* 1868, 49
- crockeræ* Barker 1979, *Trans. R. Soc. S. Aust.* 103, 4 WA.
- cruenta* C & G 1837, *Mon. Bupr.* 2, 29 NSW, Q.
- cruentata* (Kirby) 1818, *Trans. Linn. Soc.* 12, 455 [e] V, NSW, Q.
- neologa* Thomson 1879, *Typ. Bupr. App.* 1a, 35
- stillata* Blackburn 1890, *Trans. R. Soc. S. Aust.* 13, 148
- coerulea* Kerremans 1892, *Mem. Soc. r. ent. Belg.* 1, 146
- coelestis* Kerremans 1890, *Bull. Soc. ent. Belg.* 1890, 48
- crux* Saunders 1868, *J. Linn. Soc.* 9, 473 WA, SA, V.
- cupida* Kerremans 1898, *Annls Soc. ent. Belg.* 42, 138 NSW, Q.
- cupreoflava* Saunders 1869, *Insect. Saund.* 3, 10 WA, SA, V.
- magnifica* Carter 1933, *Proc. Linn. Soc. N.S.W.* 58, 161
- cupricauda* Saunders 1868, *J. Linn. Soc.* 9, 475 SA, NSW.
- cupricollis* Saunders 1868, *J. Linn. Soc.* 9, 470 [g] Q.
- cyanipes* Saunders 1868, *J. Linn. Soc.* 9, 468 WA, SA.
- cyanipes lalage* Obenberger 1933, *Čas čl. Spol. ent.* 30, 75
- cydista* Rainbow 1904, *Rec. Aust. Mus.* 5, 246 NSW, Q.
- mediana* Deuquet 1963, *Proc. Linn. Soc. N.S.W.* 88, 337
- cylindracea* Saunders 1868, *J. Linn. Soc.* 9, 476 [w] NSW.
- danesi* Obenberger 1933, *Čas čl. Spol. entom.* 30, 73 WA, SA.
- goldingi* Barker 1983, *Trans. R. Soc. S. Aust.* 107, 148 n.syn.
- decemguttata* Gory 1841, *Mon. Bupr.* 4, 132 WA.
- parva* Saunders 1869, *Insect. Saund.* 3, 26
- subversicolor* Carter 1925, *Proc. Linn. Soc. N.S.W.* 50, 231
- decemmaculata* (Kirby) 1818, *Trans. Linn. Soc.* 12, 456 [p] SA, V, NSW, Q.
- inaequalis* Kerremans 1902, *Genera Insect.* 12, 207
- hellula* Obenberger 1933, *Čas čl. Spol. ent.* 30, 71
- decipiens* (Westwood) 1837, *Mag. Zool. Bot.* 1, 25 [q]
- capucina* Thomson 1856, *Rev. Mag. Zool.* 8, 116
- tricarinata* Macleay 1863, *Trans. ent. Soc. N.S.W.* 1, 29
- octocostata* Carter 1916, *Trans. R. Soc. S. Aust.* 40, 130
- delectabilis* Hope 1847, *Trans. ent. Soc. Lond.* 4, 284 [i] SA, V, NSW.
- delectabilis cyaneiventris* Obenberger 1933, *Čas čl. Spol. ent.* 30, 106
- delectabilis carneola* Obenberger 1933, *Čas čl. Spol. ent.* 30, 106
- delicatula* Kerremans 1902, *Genera Insect.* 12, 209 [o] Q.
- delta* Thomson 1879, *Typ. Bupr. App.* 1a, 33 [o] NSW, Q.
- deceptor* Kerremans 1902, *Genera Insect.* 12, 209
- deserti* Blackburn 1892, *Trans. R. Soc. S. Aust.* 16, 36 [u] WA.
- desideria* Carter 1916, *Trans. R. Soc. S. Aust.* 40, 122 [w] WA.
- dessarti* Barker 1986, *Trans. R. Soc. S. Aust.* 110, 24 [i] WA.
- deuqueti* Carter 1927, *Proc. Linn. Soc. N.S.W.* 52, 225 NSW, Q.

- suttoni* Carter 1932, *Proc. Linn. Soc. N.S.W.* 57, 104  
*palagera* Carter 1937, *Trans. R. Soc. S. Aust.* 61, 125  
*deyrollei* Thomson 1879, *Bull. Soc. ent. Fr.* 9, 125 [g]  
 V, NSW, Q.  
*chobauti* Théry 1895, *Bull. ent. Soc. Fr.* 1895, 328 n.syn.  
*sancta* Carter 1913, *Proc. Linn. Soc. N.S.W.* 37, 501  
 n.syn.  
*dilatata* Carter 1927, *Proc. Linn. Soc. N.S.W.* 52, 226  
 [u] WA,  
*dilatocollis* Carter 1929, *Aust. Zool.* 5, 294  
*dimidiata* Carter 1908, *Proc. Linn. Soc. N.S.W.* 33, 422  
 V, NSW, Q.  
*dorsalis* Obenberger 1922, *Arch. Naturgesch.* 1922, 88,  
 118  
*leai fusciosa* Obenberger 1922, *Archiv. Naturg.* 1922,  
 88, 122  
*dingoensis* Barker 1983, *Trans. R. Soc. S. Aust.* 107,  
 146 Q.  
*discoflava* Carter 1930, *Proc. Linn. Soc. NSW* 55, 533  
 [n] Q.  
*discoidea* Carter 1931, *Aust. Zool.* 6, 343 NSW  
*discolorata* Barker 1986, *Trans. R. Soc. S. Aust.* 110, 27 [e]  
 WA,  
*dispar* Blackburn 1892, *Trans. R. Soc. S. Aust.* 15,  
 50 Q.  
*semenovi* Obenberger 1928, *Arch. Naturgesch.* 1926, 92,  
 329  
*distincta* Saunders 1868, *J. Linn. Soc.* 9, 473 [d] Q.  
*sternalis* Blackburn 1892, *Trans. R. Soc. S. Aust.* 15, 47  
*baliola* Kerremans 1898, *Annls Soc. ent. Belg.* 42, 144  
*deliciosa* Kerremans 1898, *Annls Soc. ent. Belg.* 42, 145  
*distinguenda* Saunders 1869, *Insect. Saund.* 3, 9 [n]  
 WA, SA, V, NSW,  
*differens* Carter 1931, *Aust. Zool.* 6, 364  
*doddi* Carter 1913, *Proc. Linn. Soc. N.S.W.* 37, 505 Q.  
*domina* Carter 1931, *Aust. Zool.* 6, 344 [w] WA,  
*georgiana* Barker 1979, *Trans. R. Soc. S. Aust.* 103, 7  
*dryadula* Carter 1930, *Proc. Linn. Soc. N.S.W.* 55, 535  
 New Guinea.  
*duaringae* Carter 1929, *Proc. Linn. Soc. N.S.W.* 54, 68  
 SA, NSW, Q.  
*hogania* Carter 1930, *Proc. Linn. Soc. N.S.W.* 55, 534  
*eborica* Carter 1934, *Proc. Linn. Soc. N.S.W.* 59, 253  
 NSW,  
*elderi* Blackburn 1892, *Trans. R. Soc. S. Aust.* 16, 36 [p]  
 WA, SA,  
*diversa* Kerremans 1900, *Annls Soc. ent. Belg.* 44, 317  
*elongata* Saunders 1868, *J. Linn. Soc.* 9, 480 WA,  
*eneabba* Barker 1983, *Trans. R. Soc. S. Aust.* 107, 150  
 [u] WA,  
*eremita* Blackburn 1890, *Trans. R. Soc. S. Aust.* 13, 153  
 [k] WA,  
*clarki* Carter 1922, *Proc. Linn. Soc. N.S.W.* 47, 69 n.syn.  
*erubescens* Blackburn 1901, *Trans. R. Soc. S. Aust.* 25,  
 23 Thurs. Is., Q.  
*horni* Kerremans 1908, *Dr. ent. Z.* 6, 64  
*ummaculata* Carter 1908, *Proc. Linn. Soc. N.S.W.* 33,  
 420  
*erythromelas* (Boisduval) 1835, *Voyage de l'Astrolabe*, 75  
 V, T, NSW, NT.  
*longula* Blackburn 1892, *Trans. R. Soc. S. Aust.* 15, 54  
*cicerini* Obenberger 1928, *Arch. Naturgesch.* 1926, 92,  
 331  
*erythroptera* (Boisduval) 1835, *Voyage de l'Astrolabe*, 88  
 [v] WA, V, NSW, Q.  
*canaliculata* Blackburn 1892, *Trans. R. Soc. S. Aust.*  
 15, 51  
*nigrolerminuta* Carter 1934, *Proc. Linn. Soc. N.S.W.*  
 59, 257  
*euelae* Barker 1983, *Trans. R. Soc. S. Aust.* 107, 167  
 SA,  
*eyrensis* Barker, 1986, *Trans. R. Soc. S. Aust.* 110, 9 [k]  
 SA.  
*festiva* Carter 1916, *Trans. R. Soc. S. Aust.* 40, 138 Q.  
*littiformis* Blackburn 1892, *Trans. R. Soc. S. Aust.* 15,  
 217 WA,  
*protensa* Obenberger 1928, *Arch. Naturgesch.* 1926, 92,  
 332  
*flava* Saunders 1869, *Insect. Saund.* 3, 17 WA, SA, V.  
*flavescens* Masters 1886, *Cat. Coleop.*, 86  
*flava* Thomson 1878, *Typ. Bupr.*, 55  
*flavidula* Kerremans 1890, *Bull. Soc. ent. Belg.* 1890, 47  
*flava notulata* Obenberger 1922, *Archiv. Naturgesch.*  
 1922, 115  
*flaviceps* Carter 1913, *Proc. Linn. Soc. N.S.W.* 37, 504  
 WA,  
*yllgarni* Obenberger 1928, *Arch. Naturgesch.* 1926, 92,  
 333 n.syn.  
*flaviceps cupriceps* Carter 1931, *Aust. Zool.* 6, 340  
*flavipicta* (Boisduval) 1835, *Voyage de l'Astrolabe*, 92 [a]  
 SA, V, T, NSW, Q.  
*flavovaria* Saunders 1871, *Cat. Bupr. Syn. Syst.*, 74  
*flavopicta* C & G 1837, *Mém. Bupr.* 2, 44  
*flavopicta nausicaea* Obenberger 1933, *Čas. ěsl. Spol. ent.*  
 30, 110  
*flavopicta eruta* Obenberger 1933, *Čas. ěsl. Spol. ent.*  
 30, 110  
*flavopicta palaeo* Obenberger 1933, *Čas. ěsl. Spol. ent.*  
 30, 111  
*flavopicta iris* Obenberger 1933, *Čas. ěsl. Spol. ent.*  
 30, 111  
*flavopicta phaedusa* Obenberger 1933, *Čas. ěsl. Spol. ent.*  
 30, 111  
*flavopicta antiope* Obenberger 1933, *Čas. ěsl. Spol. ent.*  
 30, 112  
*flavopicta callidice* Obenberger 1933, *Čas. ěsl. Spol. ent.*  
 30, 112  
*flavopurpurea* Carter 1908, *Proc. Linn. Soc. N.S.W.* 33,  
 421 V, NSW,  
*fluviosignata* Macleay 1863, *Trans. ent. Soc. N.S.W.* 1, 30  
 NSW, Q.  
*circumflexa* Obenberger 1922, *Arch. Naturgesch.* 1922,  
 88, 121  
*flavosignata rufosignata* Carter 1931, *Aust. Zool.* 6, 349  
*flavoviridis* Carter 1927, *Proc. Linn. Soc. N.S.W.* 52, 227  
 [v] NSW,  
*flindersi* Carter 1922, *Proc. Linn. Soc. N.S.W.* 47, 70  
 WA, SA,  
*forresti* Barker 1983, *Trans. R. Soc. S. Aust.* 107, 154 [p]  
 WA,  
*foxsoria* Carter 1927, *Proc. Linn. Soc. N.S.W.* 52, 226  
 [v] V,  
*frauciana* Barker 1983, *Trans. R. Soc. S. Aust.* 107, 143  
 [v] Q.  
*fulviventris* Macleay 1863, *Trans. ent. Soc. N.S.W.* 1, 22 [j]  
 V, NSW, Q.  
*guttigera* Blackburn 1901, *Trans. R. Soc. S. Aust.* 25, 24  
*mackayana* Carter 1930, *Proc. Linn. Soc. N.S.W.* 55, 536  
*furtiva* Barker 1983, *Trans. R. Soc. S. Aust.* 107, 148 [a]  
 WA,  
*fusca* Barker 1986, *Trans. R. Soc. S. Aust.* 110, 22 [o] Q.  
*gartwillae* Carter 1931, *Aust. Zool.* 6, 348 [n] NSW,  
*gentilis* Kerremans 1900, *Annls Soc. ent. Belg.* 44, 316  
 NSW, Q.  
*gibbicollis* Saunders 1868, *J. Linn. Soc.* 9, 470 [k]  
 WA, SA, V, NSW, Q.  
*fascigera* Kerremans 1890, *Bull. Soc. ent. Belg.* 1890, 42  
*goertlingi* Carter 1937, *Trans. R. Soc. S. Aust.* 61, 125  
 WA,  
*goodingi* Barker 1983, *Trans. R. Soc. S. Aust.* 107, 154 [c]  
 NSW.

- gracilior* Carter 1915, *Proc. Linn. Soc. N.S.W.* 40, 82 Q
- gracilis* Carter 1913, *Proc. Linn. Soc. N.S.W.* 37, 508 SA
- grata* Saunders 1869, *Insect. Saund.* 3, 11 [r] WA
- gravis* Harold 1869, *Col. Hest.* 5, 124 [w] WA
- obscuripennis* Saunders 1868, *J. Linn. Soc.* 9, 475 SA
- guttata* Blackburn 1890, *Trans. R. Soc. S. Aust.* 13, 158 SA
- guttaticollis* Blackburn 1890, *Trans. R. Soc. S. Aust.* 13, 157 Q
- consularis* Kerremans 1898, *Annls Soc. ent. Belg.* 42, 149 V, NSW
- gutifera* Obenberger 1922, *Arch. Naturgesch.* 1922, 88, 121 [o] Q
- hanloni* Barker 1983, *Trans. R. Soc. S. Aust.* 107, 163 [f] WA
- haroldi* Saunders 1871, *Cat. Bupr. Syn. Syst.*, 74 [c] Aust.
- viridiventris* Saunders 1869, *Insect. Saund.* 3, 20
- harrisoni* Carter 1925, *Proc. Linn. Soc. N.S.W.* 50, 230 [o] NSW, Q
- harslettae* Deuquet 1957, *Proc. Linn. Soc. N.S.W.* 82, 190 Q
- hawwelli* Carter 1916, *Trans. R. Soc. S. Aust.* 40, 128 Q
- hateleyi* Barker 1980, *Trans. R. Soc. S. Aust.* 104, 4 [j] WA, SA, V
- helmsi* Carter 1906, *Proc. Linn. Soc. N.S.W.* 31, 259 V, NSW
- hilaris* Hope 1846, *Trans. ent. Soc. Lond.* 4, 213 [b] V, NSW, Q
- hilaris infasciata* Carter 1933, *Proc. Linn. Soc. N.S.W.* 58, 163 Q
- hilleri* Barker 1986, *Trans. R. Soc. S. Aust.* 110, 21 Q
- hirundicauda* Carter 1916, *Trans. R. Soc. S. Aust.* 40, 137 [l] WA
- hoblerae* Carter 1922, *Proc. Linn. Soc. N.S.W.* 47, 70 NSW, Q
- mastersi* Macleay 1872, *Trans. ent. Soc. N.S.W.* 2, 245
- hoffmanseggi* Hope 1846, *Trans. ent. Soc. Lond.* 4, 211 NSW, Q
- fairmairei* Kerremans 1898, *Annls Soc. ent. Belg.* 42, 140 n.syn.
- hostilis* Blackburn 1892, *Trans. R. Soc. S. Aust.* 15, 46 WA
- humeralis* Kerremans 1902, *Genera Insect.* 12, 207 [k] NSW, Q
- Jillyardi* Carter 1913, *Proc. Linn. Soc. N.S.W.* 37, 502
- humilis* Deuquet 1947, *Proc. Linn. Soc. N.S.W.* 72, 201 NSW, Q
- hypocrita* Barker 1983, *Trans. R. Soc. S. Aust.* 107, 146 Q
- igneu* Blackburn 1892, *Trans. R. Soc. S. Aust.* 15, 219 [j] WA, SA, V
- unica* Kerremans 1898, *Annls Soc. ent. Belg.* 42, 150
- ignota* Saunders 1869, *Insect. Saund.* 3, 12 V, NSW, Q
- imitator* Carter 1930, *Proc. Linn. Soc. N.S.W.* 55, 180 NSW, Q
- immaculata* Carter 1915, *Proc. Linn. Soc. N.S.W.* 40, 81 WA
- impressicollis* Macleay 1863, *Trans. ent. Soc. N.S.W.* 1, 32 NSW, Q
- incognita* Barker 1986, *Trans. R. Soc. S. Aust.* 110, 11 [k] Q
- inconspicua* Saunders 1868, *J. Linn. Soc.* 9, 476 V, NSW, Q
- electa* Kerremans 1898, *Annls Soc. ent. Belg.* 42, 154 n.syn.
- indistincta* Saunders 1869, *Insect. Saund.* 3, 11 V, NSW
- indistincta anchorifera* Obenberger 1933, *Čas. ěsl. Spol. entom.* 30, 76
- indistincta electa* Obenberger 1933, *Čas. ěsl. Spol. entom.* 30, 76
- indistincta acclivis* Obenberger 1933, *Čas. ěsl. Spol. entom.* 30, 76
- indistincta extrema* Obenberger 1933, *Čas. ěsl. Spol. entom.* 30, 76
- inermis* Kerremans 1890, *Bull. Soc. ent. Belg.* 1890, 45 Q
- nova* Kerremans 1902, *Genera Insect.* 12, 208
- rubella* Carter 1931, *Aust. Zool.* 6, 3<sup>25</sup>
- inflata* Barker 1980, *Trans. R. Soc. S. Aust.* 104, 5 [a] NSW
- inculpita* Carter 1934, *Proc. Linn. Soc. N.S.W.* 59, 255 T
- insignificollis* Blackburn 1900, *Trans. R. Soc. S. Aust.* 24, 45 [w] WA
- insignis* Blackburn 1892, *Trans. R. Soc. S. Aust.* 15, 217 [o] V, NSW
- caudata* Kerremans 1900, *Annls Soc. ent. Belg.* 44, 316
- insularis* Blackburn 1897, *Trans. R. Soc. S. Aust.* 21, 30 T
- cognata* Kerremans 1898, *Annls Soc. ent. Belg.* 42, 136
- intacta* Carter 1930, *Proc. Linn. Soc. N.S.W.* 55, 181 Q
- interstitialis* Carter 1931, *Aust. Zool.* 6, 345 [v] V
- jeonae* Barker 1983, *Trans. R. Soc. S. Aust.* 107, 164 Q
- jekelli* Saunders 1868, *J. Linn. Soc.* 9, 467 [l] SA, V, NSW
- Jospilota* C & G 1837, *Mon. Bupr.* 2, 35 WA, SA, V, NSW
- lacerta* Obenberger 1933, *Čas. ěsl. Spol. ent.* 30, 109
- jubata* Blackburn 1890, *Trans. R. Soc. S. Aust.* 13, 150 T
- tasmani* Obenberger 1928, *Arch. Naturgesch.* 1926, 92, 328
- pratensis* Carter 1934, *Proc. Linn. Soc. N.S.W.* 59, 255
- jucunda* Saunders 1868, *J. Linn. Soc.* 9, 481 NSW, Q
- observans* Kerremans 1898, *Annls Soc. ent. Belg.* 42, 139
- julia* Thomson 1879, *Typ. Bupr. App.* 18, 31 [g] SA
- blackburni* Carter 1916, *Trans. R. Soc. S. Aust.* 40, 118, n.syn.
- kempsteri* Barker 1986, *Trans. R. Soc. S. Aust.* 110, 12 [m] WA
- kerremansi* Blackburn 1890, *Trans. R. Soc. S. Aust.* 13, 147 SA, V, NSW, Q
- apicalis* Kerremans 1890, *Bull. Soc. ent. Belg.* 1890, 45
- kershawi* Carter 1924, *Proc. Linn. Soc. N.S.W.* 49, 522 V, NSW
- kershawi carterella* Obenberger 1933, *Čas. ěsl. Spol. entom.* 30, 104
- kiatae* Barker 1980, *Trans. R. Soc. S. Aust.* 104, 6 V
- kirbyi* (Guerin) 1830, *Voyage Coquille*, 65 [w] SA, V, NSW
- tacita* Kerremans 1898, *Annls Soc. ent. Belg.* 42, 153
- kirbyi adonis* Obenberger 1922, *Archiv. Naturgesch.* 1922, 88, 118
- kirbyi peregrina* Obenberger 1922, *Archiv. Naturgesch.* 1922, 88, 118
- klugi* C & G 1837, *Mon. Bupr.* 2, 27 [h] NSW
- klugi nixa* Obenberger 1933, *Čas. ěsl. Spol. ent.* 30, 75
- laena* Thomson 1879, *Typ. Bupr. App.* 18, 36 [a] WA
- verna* Carter 1937, *Trans. R. Soc. S. Aust.* 61, 126
- kaszabi* Pochon 1967, *Annls hist. nat. Mus. Natn. hung.* 59, 280
- laevinotata* Carter 1934, *Proc. Linn. Soc. N.S.W.* 59, 254 [d] NSW, Q

- latipes* Carter 1924, *Proc. Linn. Soc. N.S.W.* 49, 21  
NSW, Q.
- leai* Carter 1916, *Trans. R. Soc. S. Aust.* 40, 136 V, T.
- lepida* Carter 1916, *Trans. R. Soc. S. Aust.* 40, 129  
WA.
- lipitana* Thomson 1857, *Arch. Ent.* 1, 114 NSW, Q.
- masteri* (Macleay) 1872, *Trans. ent. Soc. N.S.W.* 2, 241
- ocularis* Kerremans 1898, *Annls Soc. ent. Belg.* 42, 155
- dawsonensis* Blackburn 1890, *Trans. R. Soc. S. Aust.*  
13, 155 n.syn.
- pulchella* Carter 1916, *Trans. R. Soc. S. Aust.* 40, 135
- longicollis* Saunders 1869, *Insect. Saund.* 3, 21 [w]  
WA.
- bicolorella* Obenberger 1928, *Arch. Naturgesch.* 1926,  
92, 329
- prolongata* Carter 1935, *Proc. Linn. Soc. N.S.W.* 60, 179
- flavocoerulea* Carter 1938, *Rec. Aust. Mus.* 20, 234
- loriae* Kerremans 1896, *Annals Mus. civ. Stor. nat.*
- Giacomo Doria* 36, 358 New Guinea, NT, Q.
- lukini* Barker 1986, *Trans. R. Soc. S. Aust.* 110, 24 [w]  
SA.
- luteipennis* Gory 1841, *Mon. Bupr.* 4, supp., 130 V,  
NSW, Q.
- luteipennis distigma* Obenberger 1933, *Čas čsl. Spol.*  
*ent.* 30, 69
- luteocincta* Saunders 1868, *J. Linn. Soc.* 9, 478 [j]  
NSW, Q.
- macmillani* Barker 1979, *Trans. R. Soc. S. Aust.* 103, 8 [j]  
WA.
- maculicollis* Carter 1916, *Trans. R. Soc. S. Aust.* 40,  
127 Q.
- maculifer* Kerremans 1902, *Genera Insect.* 12, 208 [j]  
NSW, Q.
- maculifer uericollis* Carter 1929, *Proc. Linn. Soc. N.S.W.*  
53, 273
- maculipennis* Saunders 1868, *J. Linn. Soc.* 9, 480  
NSW.
- magnificollis* Barker 1979, *Trans. R. Soc. S. Aust.* 103, 2  
Q.
- magnifica* Blackburn 1896, *Trans. R. Soc. S. Aust.* 20,  
35
- mallecana* Carter 1931, *Aust. Zool.* 6, 340 [n] SA, V,  
NSW.
- mansueta* Kerremans 1898, *Annls Soc. ent. Belg.* 42, 155  
WA.
- marginata* Barker 1983, *Trans. R. Soc. S. Aust.* 107, 151  
SA, V.
- marginicollis* Saunders 1868, *J. Linn. Soc.* 9, 469 V,  
NSW.
- bifasciatella* Obenberger 1922, *Arch. Naturgesch.* 1922,  
88, 115
- media* Hope 1847, *Trans. ent. Soc. Lond.* 4, 284 [q]  
SA, V.
- septemnotata* Carter 1916, *Trans. R. Soc. S. Aust.* 40, 86
- septemmaculata* Blackburn 1892, *Trans. R. Soc. S.*  
*Aust.* 15, 45
- melosensis* Barker 1986, *Trans. R. Soc. S. Aust.* 110, 13 [h]  
SA.
- metallica* Barker 1979, *Trans. R. Soc. S. Aust.* 103, 5  
WA.
- militaris* Carter 1922, *Proc. Linn. Soc. N.S.W.* 47, 71 [n]  
V, NSW.
- mimica* Barker 1980, *Trans. R. Soc. S. Aust.* 104, 3 [v]  
Q.
- minuta* Blackburn 1892, *Trans. R. Soc. S. Aust.* 15, 44 [a]  
Q.
- montigena* Oke 1928, *Proc. Linn. Soc. N.S.W.* 53, 25 [e]  
V, NSW.
- alpestris* Barker 1983, *Trans. R. Soc. S. Aust.* 107, 146  
n.syn.
- moribunda* Saunders 1869, *Insect. Saund.* 3, 18 NSW.
- rotundata* Saunders 1869, *Insect. Saund.* 3, 19
- rotundata enya* Obenberger 1933, *Čas čsl. Spol.*  
*entom.* 12, 332
- mustelamajor* Thomson 1857, *Arch. Ent.* 1, 115 WA,  
SA, V, NSW, Q.
- gibbosa* Macleay 1863, *Trans. ent. Soc. N.S.W.* 1, 26
- crasma* Carter 1935, *Proc. Linn. Soc. N.S.W.* 60, 180
- nanula* Kerremans 1890, *Bull. Soc. ent. Belg.* 1890, 48 [b]  
NSW, Q.
- nasula* Saunders 1869, *Insect. Saund.* 3, 15 V, NSW,  
Q.
- fossithorax* Obenberger 1928, *Arch. Naturgesch.* 1926,  
92, 329
- neglecta* Carter 1916, *Trans. R. Soc. S. Aust.* 40, 123  
NSW.
- nigriceps* Barker 1979, *Trans. R. Soc. S. Aust.* 103, 4  
NT, Q.
- nigriventris* Macleay 1863, *Trans. ent. Soc. N.S.W.* 1, 27  
Q.
- obliqua* Kerremans 1902, *Genera Insect.* 12, 209 [c]  
NSW, Q.
- astridae* Deuquet 1938, *Proc. Linn. Soc. N.S.W.* 63, 307
- oblita* Carter 1931, *Aust. Zool.* 6, 347 [a] NSW, Q.
- obscura* Saunders 1869, *Insect. Saund.* 3, 26 [e] SA,  
Q.
- obscura posticedivisa* Obenberger 1933, *Čas čsl.*  
*Spol. ent.* 30, 106
- obscura anticedivisa* Obenberger 1933, *Čas čsl. Spol.*  
*ent.* 30, 106
- obsepta* Kerremans 1890, *Bull. Soc. ent. Belg.* 1890, 44  
[d] Q.
- occidentalis* Barker 1979, *Trans. R. Soc. S. Aust.* 103, 9  
WA.
- ocelligera* Gory 1841, *Mon. Bupr.* 4, 133 [q] T.
- ochreiventris* Saunders 1869, *Insect. Saund.* 3, 8 [j]  
NSW, Q.
- cara* Blackburn 1892, *Trans. R. Soc. S. Aust.* 15, 216,  
n.syn.
- octomaculata* Saunders 1868, *J. Linn. Soc.* 9, 472 [t]  
SA, V, NSW, Q.
- octosignata* Carter 1919, *Proc. Linn. Soc. N.S.W.* 44, 139  
Q.
- octospilota* C & G 1837, *Mon. Bupr.* 2, 28 [s] NSW,  
Q.
- femorata* C & G 1837, *Mon. Bupr.* 2, 37
- octospilota roseipes* Deuquet 1947, *Proc. Linn. Soc.*  
*N.S.W.* 81, 154
- ornata* Blackburn 1892, *Trans. R. Soc. S. Aust.* 15, 53  
V, NSW.
- ovata* Barker 1979, *Trans. R. Soc. S. Aust.* 103, 10  
WA, SA, V.
- pallas* Blackburn 1901, *Trans. R. Soc. S. Aust.* 25, 22  
Thursday Is., Q.
- auripennis* Barker 1979, *Trans. R. Soc. S. Aust.* 103,  
2 n.syn.
- aurifera* Carter 1922, *Proc. Linn. Soc. N.S.W.* 47, 68
- pallidipennis* Blackburn 1890, *Trans. R. Soc. S. Aust.* 13,  
154 WA, SA, V.
- pallidiventris* C & G 1837, *Mon. Bupr.* 2, 42 [p]  
WA, SA, V.
- rustica* Kerremans 1898, *Annls Soc. ent. Belg.* 42, 154
- parallola* White 1859, *Proc. Zool. Soc. Lond.* 27, 119  
WA, SA, V, NSW, Q.
- elongatula* Macleay 1872, *Trans. ent. Soc. N.S.W.* 2, 246
- paralleipennis* Obenberger 1934, *Coleop. Cat.* 12, 725 [w]  
WA, SA, V, NSW.
- parallola* Saunders 1869, *Insect. Saund.* 3, 16
- parvula* Deuquet 1956, *Proc. Linn. Soc. N.S.W.* 81, 155 [b]  
NSW, Q.
- pearsoni* Barker 1986, *Trans. R. Soc. S. Aust.* 110, 17 [f]  
Q.



- perlonga* Carter 1931, *Aust. Zool.* 6, 343 [w] SA, V, NSW.
- pertyi* C & G 1837, *Mon. Bupr.* 2, 23 NSW, Q.
- mimus* Saunders 1868, *J. Linn. Soc.* 9, 479
- phaeorhaea* (Kirby) 1818, *Trans. Linn. Soc.* 12, 456 WA, Q.
- picta* C & G 1837, *Mon. Bupr.* 2, 46 [p] WA.
- purpurea* Hope 1846, *Trans. ent. Soc. Lond.* 4, 213
- laetabilis* Kerremans 1898, *Annls Soc. ent. Belg.* 42, 153
- pictipennis* Saunders 1868, *J. Linn. Soc.* 9, 471 WA.
- piliventris* Saunders 1868, *J. Linn. Soc.* 9, 474 [v] SA, V, NSW.
- generosa* Kerremans 1898, *Annls Soc. ent. Belg.* 42, 150
- placens* Kerremans 1898, *Annls Soc. ent. Belg.* 42, 143 [j] NSW.
- placida* Thomson 1879, *Typ. Bupr. App. Ia*, 33 [v] WA.
- planata* Carter 1916, *Trans. R. Soc. S. Aust.* 40, 133 WA.
- auricollis* Thomson 1857, *Arch. Ent.* 1, 114
- planipes* Barker 1979, *Trans. R. Soc. S. Aust.* 103, 3 NSW, Q.
- powelli* Barker 1983, *Trans. R. Soc. S. Aust.* 107, 145 [a] WA, SA.
- praetermissa* Carter 1921, *Proc. Linn. Soc. N.S.W.* 46, 306 V, NSW, Q.
- producta* Saunders 1868, *J. Linn. Soc.* 9, 482 [o] NSW, Q.
- acutipennis* Thomson 1879, *Typ. Bupr. App. Ia*, 33
- sulciellus* Kerremans 1902, *Genera Insect.* 12, 209
- producta polymela* Obenberger 1933, *Čas. čsl. Spol. ent.* 30, 112
- propinqua* Carter 1916, *Trans. R. Soc. S. Aust.* 40, 124 [w] SA.
- propinqua carteriana* Obenberger 1933, *Čas. čsl. Spol. ent.* 30, 109
- pseudasilida* Barker 1983, *Trans. R. Soc. S. Aust.* 107, 161 [o] NSW, Q.
- puella* Saunders 1869, *Insect. Saund.* 3, 25 [c] Q.
- aurilimbata* Carter 1922, *Proc. Linn. Soc. N.S.W.* 47, 68 [i. syn.]
- puerilis* Kerremans 1898, *Annls Soc. ent. Belg.* 42, 147 [e] NSW, Q.
- pulchra* Saunders 1869, *Insect. Saund.* 3, 22 WA.
- pulchripes* Blackburn 1897, *Trans. R. Soc. S. Aust.* 21, 31 V, NSW.
- pulla* Barker 1986, *Trans. R. Soc. S. Aust.* 110, 24 [i, o] NSW.
- punctatissima* Saunders 1869, *Insect. Saund.* 3, 24 NSW.
- punctatosulcata* Saunders 1869, *Insect. Saund.* 3, 24 [d] V, NSW, Q.
- litigiosa* Kerremans 1890, *Bull. Soc. ent. Belg.* 1890, 45
- punctiventris* Saunders 1869, *Insect. Saund.* 3, 17 WA, V.
- pisiformis* Carter 1916, *Trans. R. Soc. S. Aust.* 40, 125
- puteolata* Carter 1939, *Proc. Linn. Soc. N.S.W.* 64, 300 [m] WA, SA.
- quadrifasciata* Saunders 1869, *J. Linn. Soc.* 9, 477 WA, SA, NT.
- quadriguttata* Macleay 1863, *Trans. ent. Soc. N.S.W.* 1, 28 Q.
- scutellaris* Kerremans 1900, *Annls Soc. ent. Belg.* 44, 316
- quadriplagiata* Carter 1930, *Proc. Linn. Soc. N.S.W.* 55, 353 Q.
- quinquepunctata* Waterhouse 1874, *Trans. R. ent. Soc. Lond.* 1874, 54 Q.
- radians* Carter, 1933, *Proc. Linn. Soc. N.S.W.* 58, 160 WA.
- recta* Saunders 1869, *Insect. Saund.* 3, 23 [u] WA, SA, V.
- rectifasciata* Saunders 1868, *J. Linn. Soc.* 9, 472 V, NSW.
- vigilans* Kerremans 1898, *Annls Soc. ent. Belg.* 42, 143
- richardsi* Barker 1979, *Trans. R. Soc. S. Aust.* 103, 6 [s] WA.
- robusta* Saunders 1869, *Insect. Saund.* 3, 6 WA, SA, V.
- robusta castula* Obenberger 1933, *Čas. čsl. Spol. ent.* 30, 75
- robusta unifasciata* Obenberger 1933, *Čas. čsl. Spol. ent.* 30, 75
- robusta tristigmata* Obenberger 1933, *Čas. čsl. Spol. ent.* 30, 75
- rollei* Kerremans 1908, *Di. ent. Z.* 6, 63 Q.
- hackeri* Carter 1913, *Proc. Linn. Soc. N.S.W.* 37, 484
- caudata* Carter 1908, *Proc. Linn. Soc. N.S.W.* 33, 418
- rostralis* Carter 1917, *Proc. Linn. Soc. N.S.W.* 42, 718 WA.
- rostrata* Thomson 1879, *Typ. Bupr. App. Ia*, 36 WA.
- tuberculata* Carter 1931, *Aust. Zool.* 6, 346 [h] Q.
- violata* Deuquet 1956, *Proc. Linn. Soc. N.S.W.* 81, 156
- rubiventris* Blackburn 1900, *Trans. R. Soc. S. Aust.* 24, 46 [l] WA.
- inuitata* Carter 1933, *Proc. Linn. Soc. N.S.W.* 58, 160
- tudis* Carter 1934, *Proc. Linn. Soc. N.S.W.* 59, 256 T.
- rufa* Barker 1986, *Trans. R. Soc. S. Aust.* 110, 9 [k] WA.
- rufipennis* (Kirby) 1818, *Trans. Linn. Soc.* 12, 456 WA, SA, V, T, NSW, Q.
- crocipennis* C & G 1837, *Mon. Bupr.* 2, 21
- crocipennis* Hope 1846, *Trans. ent. Soc. Lond.* 1846, 292
- quadrifoveolata* Obenberger 1933, *Čas. čsl. Spol. ent.* 30, 69
- rufipes* Macleay 1863, *Trans. ent. Soc. N.S.W.* 1, 23 Q.
- stigmaticollis* Obenberger 1928, *Arch. Naturgesch.* 1926, 92, 334
- rufolimbata* Carter 1916, *Trans. R. Soc. S. Aust.* 40, 120 [k] WA, SA.
- rutula* Deuquet 1947, *Proc. Linn. Soc. N.S.W.* 72, 200 NSW, Q.
- sagittaria* C & G 1837, *Mon. Bupr.* 2, 31 WA.
- hopei* Saunders 1868, *Trans. R. ent. Soc. Lond.* 1868, 39.
- sanguinolenta* C & G 1837, *Mon. Bupr.* 2, 45 [q] WA.
- scalaris* (Boisduval) 1835, *Voyage de l'Astrolabe*, 89 [a] V, NSW, Q.
- cyathicollis* (Boisduval) 1835, *Voyage de l'Astrolabe*, 91
- crucigera* C & G 1837, *Mon. Bupr.* 2, 40
- viridis* C & G 1837, *Mon. Bupr.* 2, 46
- crucigera* Hope 1838, *Col. Man.* 2, 162
- transversegicta* Thomson 1879, *Typ. Bupr. App. Ia*, 35, n. syn.
- macleayi* Blackburn 1892, *Trans. R. Soc. S. Aust.* 15, 48
- prudens* Kerremans 1898, *Annls Soc. ent. Belg.* 42, 152
- sunvis* Kerremans 1902, *Genera Insect.* 12, 210
- crucioiles* Obenberger 1922, *Arch. Naturgesch.* 1922, 88, 118
- scalaris acle* Obenberger 1933, *Čas. čsl. Spol. ent.* 30, 108
- scalaris archianassa* Obenberger 1933, *Čas. čsl. Spol. ent.* 30, 108
- scintillata* Barker 1983, *Trans. R. Soc. S. Aust.* 107, 164 Q.
- semicincta* C & G 1837, *Mon. Bupr.* 2, 19 V, NSW.
- seminigra* Carter 1913, *Proc. Linn. Soc. N.S.W.* 37, 500 Q.
- semituturalis* Saunders 1868, *J. Linn. Soc.* 9, 468 SA, NSW, V.
- speciosa* Kerremans 1898, *Annls Soc. ent. Belg.* 42, 137
- sepiemaculata* Waterhouse 1874, *Trans. R. ent. Soc. Lond.* 1874, 540 [i] NSW.

- septempilota* Carter 1913, *Proc. Linn. Soc. N.S.W.* 37, 503 WA.
- serrulipennis* Carter 1916, *Trans. R. Soc. S. Aust.* 40, 127 WA.
- sexcavata* Deuquet 1938, *Proc. Linn. Soc. N.S.W.* 63, 306 NSW.
- sexguttata* Macleay 1863, *Trans. ent. Soc. N.S.W.* 1, 29 [c] V, NSW, Q.
- carteri* Obenberger 1922, *Arch. Naturgesch.* 1922, 88, 123
- sexguttata humeriguttata* Obenberger 1922, *Arch. Naturgesch.* 1922, 88, 123
- sexnotata* Carter 1916, *Trans. R. Soc. S. Aust.* 40, 131 WA.
- sexplagiata* Gory 1841, *Mon. Bupr.* supp. 4, 132 [v] SA, V, NSW, Q.
- plagiata* Gory 1841, *Mon. Bupr.* 4, err. add.
- crenata* C & G 1837, *Mon. Bupr.* 2, 39
- hopei* Boheman 1858, *Eugenies Resa Zoologi*, 1, 61
- similata* Boheman 1858, *Eugenies Resa Zoologi*, 1, 62
- kreffti* Macleay 1872, *Trans. ent. Soc. N.S.W.* 2, 245
- variata* Kerremans 1902, *Genera Insect.* 12, 209
- sexualis* Carter 1929, *Proc. Linn. Soc. N.S.W.* 54, 69 Q.
- sieboldi* C & G 1837, *Mon. Bupr.* 2, 38 WA.
- signata* Kerremans 1902, *Genera Insect.* 12, 210 [p] WA.
- simulata* C & G 1837, *Mon. Bupr.* 2, 26 [r] WA, SA, V.
- perplexa* Hope 1846, *Trans. ent. Soc. Lond.* 4, 211
- helenae* (Hope) 1846, *Trans. ent. Soc. Lond.* 4, 215
- lanuginosa* (Hope) 1846, *Trans. ent. Soc. Lond.* 4, 215
- lais* Thomson 1879, *Typ. Bupr. App.* 1a, 33
- phryne* Thomson 1879, *Typ. Bupr. App.* 1a, 33
- fraterna* Kerremans 1890, *Bull. Soc. ent. Belg.* 1890, 46
- distinguenda* Thomson 1897, *Typ. Bupr. App.* 1a, 34
- equina* Blackburn 1892, *Trans. R. Soc. S. Aust.* 15, 48
- ravilla* Obenberger 1922, *Arch. Naturgesch.* 1922, 88, 117
- acutangula* Obenberger 1928, *Arch. Naturgesch.* 1926, 92, 333
- yorkensis* Obenberger 1928, *Arch. Naturgesch.* 1926, 92, 335
- burchelli dominula* Obenberger 1933, *Čas čsl. Spol. ent.* 30, 76
- skusei* Blackburn 1892, *Trans. R. Soc. S. Aust.* 15, 46 NSW, Q.
- spectabilis* Kerremans 1900, *Annls Soc. ent. Belg.* 44, 315 [o] Q.
- spilota* C & G 1837, *Mon. Bupr.* 2, 24 NSW.
- septemmaculata* (Mannerheim) 1837, *Bull. Soc. imp. nat. Moscou* 8, 98
- diama* Obenberger 1922, *Arch. Naturgesch.* 1922, 88, 120
- spilota polycaste* Obenberger 1933, *Čas čsl. Spol. ent.* 30, 112
- spinolae* Gory 1841, *Mon. Bupr.* 4, supp. 129 V, NSW, Q.
- stellata* Barker 1986, *Trans. R. Soc. S. Aust.* 110, 10 [k] WA.
- storeyi* Barker 1983, *Trans. R. Soc. S. Aust.* 107, 152 [j] Q.
- straminea* Macleay 1863, *Trans. ent. Soc. N.S.W.* 1, 25 [j] Q.
- atlantica* Kerremans 1898, *Annls Soc. ent. Belg.* 42, 149
- johannae* Théry 1911, *Mém. Soc. r. ent. Belg.* 18, 55
- strigata* Macleay 1863, *Trans. ent. Soc. N.S.W.* 1, 27 [j] Q.
- subacuticeps* Barker 1979, *Trans. R. Soc. S. Aust.* 103, 7 WA.
- subfasciata* Saunders 1868, *J. Linn. Soc.* 9, 479 WA.
- subgrata* Blackburn 1900, *Trans. R. Soc. S. Aust.* 26, 41 [n] NSW.
- campestris* Kerremans 1898, *Annls Soc. ent. Belg.* 42, 139
- subnotata* Carter 1933, *Proc. Linn. Soc. N.S.W.* 58, 159 [j] WA, V.
- subpura* Blackburn 1903, *Trans. R. Soc. S. Aust.* 27, 307 NSW.
- subtasea* Barker 1983, *Trans. R. Soc. S. Aust.* 107, 150 WA, SA.
- subtincta* Carter 1933, *Proc. Linn. Soc. N.S.W.* 58, 159 [j] WA, V.
- subtrifasciata* C & G 1837, *Mon. Bupr.* 2, 41 [q] WA.
- rubrocincta* Gehin 1855, *Bull. Soc. Hist. nat. Metz* 7, 63
- rubrocincta euanthe* Obenberger 1933, *Čas čsl. Spol. ent.* 30, 107
- subvieina* Barker 1983, *Trans. R. Soc. S. Aust.* 107, 163 [d] V, NSW.
- sulfurea* Deuquet 1938, *Proc. Linn. Soc. N.S.W.* 63, 305 NSW.
- supergrata* Barker 1983, *Trans. R. Soc. S. Aust.* 107, 153 [n] V.
- tasmaniensis* Barker 1986, *Trans. R. Soc. S. Aust.* 110, 17 [s] T.
- terminalis* Kerremans 1890, *Bull. Soc. ent. Belg.* 1890, 45 NSW.
- terraereginae* Blackburn 1893, *Trans. R. Soc. S. Aust.* 17, 295 [f] Q.
- triangulosa* Kerremans 1898, *Annls Soc. ent. Belg.* 42, 137
- testacea* Saunders 1869, *Insect. Saund.* 3, 14 V, NSW, Q.
- thomsoni* Saunders 1868, *J. Linn. Soc.* 9, 477 [d] V, NSW.
- cordifer* Kerremans 1890, *Bull. Soc. ent. Belg.* 1890, 44 n.syn.
- dulcis* Blackburn 1900, *Trans. R. Soc. S. Aust.* 26, 41
- colorata* Kerremans 1898, *Annls Soc. ent. Belg.* 42, 141
- thurmerae* Barker 1983, *Trans. R. Soc. S. Aust.* 107, 144 [w] WA.
- tigris* Barker 1983, *Trans. R. Soc. S. Aust.* 107, 143 [v] Q.
- uncticauda* Carter 1916, *Trans. R. Soc. S. Aust.* 40, 136 WA.
- titania* Carter 1916, *Trans. R. Soc. S. Aust.* 40, 134 Q.
- tricolor* (Kirby) 1818, *Trans. Linn. Soc.* 12, 455 NSW.
- curta* Saunders 1868, *J. Linn. Soc.* 9, 467
- optima* Kerremans 1902, *Genera Insect.* 12, 207
- trifasciata* C & G 1837, *Mon. Bupr.* 2, 38 [w] WA.
- apicalis* C & G 1837, *Mon. Bupr.* 2, 43
- gebhardtii* Obenberger 1928, *Arch. Naturgesch.* 1926, 92, 332
- trimaculata* Saunders 1868, *J. Linn. Soc.* 9, 482 [f] WA.
- tripartita* Kerremans 1900, *Annls Soc. ent. Belg.* 44, 317 [ul] WA.
- triramosa* Thomson 1879, *Typ. Bupr. App.* 1a, 32 [r] SA, V.
- trispiculis* Carter 1931, *Aust. Zool.* 6, 340 Q.
- tropica* Carter 1922, *Proc. Linn. Soc. N.S.W.* 47, 72 Q.
- turbulenta* Barker 1986, *Trans. R. Soc. S. Aust.* 110, 22 [v] WA.
- turneri* Barker 1983, *Trans. R. Soc. S. Aust.* 107, 166 [m] SA, NSW.
- tyrrhena* Blackburn 1903, *Trans. R. Soc. S. Aust.* 27, 306 [l] Q.
- uncata* Barker 1986, *Trans. R. Soc. S. Aust.* 110, 11 [r] V.
- undulata* (Donovan) 1805, *Epitome Natural History Insects New Holland* pl. 7, fig. 5 V, NSW.

- laportei* Boheman 1858, *Eugenies Resa Zoologi*, 1, 61  
*opacipennis* Obenberger 1922, *Arch. Naturgesch.* 1922, 88, 116  
*uptoni* Barker 1979, *Trans. R. Soc. S. Aust.* 103, 15  
 NT.  
*vallisii* Deuquet 1964, *Proc. Linn. Soc. N.S.W.* 89, 128  
 Q.  
*variegata* Barker 1983, *Trans. R. Soc. S. Aust.* 107, 162  
 V. ACT.  
*variopicta* Thomson 1878, *Typ. Bupr.* 54 V. NSW  
*vegeta* Hope 1847, *Trans. ent. Soc. Lond.* 4, 283 [e]  
 SA, V.  
*coeruleiventris* Saunders 1869, *Insect. Saund.* 3, 20  
*vegeta hopeana* Obenberger 1933, *Čas. ěsl. Spol.*  
*ent.* 30, 104  
*venusta* Carter 1914, *Proc. Linn. Soc. N.S.W.* 39, 84  
 Q.  
*suavis* Carter 1913, *Proc. Linn. Soc. N.S.W.* 37, 507  
*modesta* Obenberger 1922, *Arch. Naturgesch.* 1922, 88,  
 122  
*verdupeps* Barker 1979, *Trans. R. Soc. S. Aust.* 103, 8 [w]  
 WA.  
*versicolor* C & G 1837, *Mon. Bupr.* 2, 42 WA.  
*strandii* (Obenberger) 1920, *Ent. Mitt.* 1920, 165  
*vicina* Saunders 1868, *Trans. R. ent. Soc. Lond.* 1868, 43  
 [d] V, NSW,  
*bicincta* C & G 1837, *Mon. Bupr.* 2, 131  
*vicinensis* Blackburn 1890, *Trans. R. Soc. S. Aust.* 13,  
 152 [k] V, NSW, Q.  
*sensitiva* Kerremans 1898, *Annls Soc. ent. Belg.* 42, 148  
*violacea* Macleay 1863, *Trans. ent. Soc. N.S.W.* 1, 23  
 NSW, Q.  
*obliquefasciata* Obenberger 1922, *Arch. Naturgesch.*  
 1922, 88, 115  
*virinea* Erichson 1842, *Arch. Naturgesch.* 8, 135 T.  
*viridiventris* Macleay 1863, *Trans. ent. Soc. N.S.W.* 1, 27  
 NT, Q.  
*triguttata* Macleay 1863, *Trans. ent. Soc. N.S.W.* 1, 28  
*subcostata* Kerremans 1900, *Annls Soc. ent. Belg.* 44,  
 317  
*viridolinea* Barker 1986, *Trans. R. Soc. S. Aust.* 110, 25 [j]  
 SA, V.  
*vittata* Saunders 1868, *J. Linn. Soc.* 9, 478 SA, V.  
*vulgaris* Carter 1931, *Aust. Zool.* 6, 347 WA.  
*walfordi* Barker 1979, *Trans. R. Soc. S. Aust.* 103, 11 [j]  
 Q.  
*warringensis* Barker 1986, *Trans. R. Soc. S. Aust.* 110,  
 22 [v] NSW, Q.  
*wilsoni* Saunders 1868, *J. Linn. Soc.* 9, 476 [a] V, T,  
 NSW.  
*sigma* Kerremans 1890, *Bull. Soc. ent. Belg.* 1890, 43  
*confinis* Kerremans 1898, *Annls Soc. ent. Belg.* 42, 151  
*septentrionis* Obenberger 1922, *Arch. Naturgesch.* 1922,  
 88, 116  
*xanthopilosa* Hope 1847, *Trans. ent. Soc. Lond.* 4, 283  
 SA, V, NSW.  
*splendida* Gehin 1855, *Bull. Soc. Hist. nat. Metz.* 7, 64  
*xanthopilota subfuscigera* Obenberger 1933, *Čas. ěsl.*  
*Spol. ent.* 30, 70  
*xanthopilota dichoptera* Obenberger 1933, *Čas. ěsl.*  
*Spol. ent.* 30, 70  
*yellowdinensis* Barker 1983, *Trans. R. Soc. S. Aust.* 107,  
 151 [j] WA.  
*zecki* Deuquet 1959, *Proc. Linn. Soc. N.S.W.* 84, 129  
 [o] Q.

## Acknowledgments

I wish to thank the following for assistance: Dr G. F. Gross and Dr E. G. Matthews, South Australian Museum; Dr J. Lawrence and Mr T. Weir, Division of Entomology, C.S.I.R.O.; Dr G. B. Monteith, Queensland Museum; Dr T. F. Houston, Western Australian Museum; Dr A. Neboiss and Mr K. Walker, National Museum of Victoria; Mr G. Holloway, Australian Museum, Sydney; Miss A. Green, Tasmanian Museum & Art Gallery, Hobart; Dr G. F. Bornemissza, C.S.I.R.O., Hobart; Miss C. M. H. von Hayek, British Museum of Natural History, London; Dr P. Dessart and M. J. Cools, Institut Royal des Sciences Naturelles de Belgique, Brussels; M. A. Descarpentries, Muséum National d'Histoire Naturelle, Paris; Dr S. Bily, National Museum Prague, Czechoslovakia; Dr K. Wise, Auckland Institute and Museum, Auckland; Mr K. T. Richards, Department of Agriculture, South Perth; Mr R. I. Storey and Mr T. Jacobson, Department of Primary Industry, Mareeba; Dr R. Chinnock, South Australian Herbarium, Adelaide; Mr E. E. Adams, Edungalba; Dr J. M. and Mr A. Barker, Adelaide; Mr and Mrs G. Burns, Mornington; Mr and Mrs K. Carnaby, Wilga; Mr M. Powell, Attadale; Mr R. P. McMillan, Cottesloe; Mr and Mrs P. McQuillan, Hobart; Mr G. Williams, Lansdowne; Mrs J. Harslett, Amiens; Mr A. Walford-Huggins, Mt Molloy; Mr A. Hiller, Mt Glorious; Mr J. Sedlacek, Brisbane; Mr A. Sundholm, Penrith; Mr R. L. Westcott, Salem, Oregon; Miss H. Vanderwoude, Mrs J. Gardner, Mr P. Kempster and Mr D. J. Williams, Department of Zoology, University of Adelaide; Ms J. Thurmer, Adelaide, for illustrations 5H, 5J, 7K and Mr D. R. Goodwins, Adelaide, for the other 43 illustrations; Mr B. K. Bowen, Director, Fisheries and Wildlife Department, Western Australia for a scientific permit to collect Buprestids; The Director, National Parks and Wildlife Service, South Australia for permission to collect in National Parks; The Director, National Parks Service, N.S.W. for permission to collect in the Warrumbungles National Park; Australian Research Grants Committee, Australian Biological Resources Committee, Wildlife Conservation Fund, National Parks and Wildlife Service of South Australia, the Mark Mitchell Trust Fund and the Ian Potter Foundation for grants-in-aid of research.

## References

- BARKER, S. (1979) New species and a catalogue of *Stigmodera* (Castiarina) (Coleoptera: Buprestidae). *Trans. R. Soc. S. Aust.* 103, 1-23
- (1980) New species and synonyms of *Stigmodera* (Castiarina) (Coleoptera: Buprestidae). *Ibid.* 104, 1-7.
- (1983) New synonyms and new species of

- Stigmodera (Castiarina)* (Coleoptera: Buprestidae). *Ibid.* **107**, 139-169.
- BLACKBURN, T. (1890) Further notes on Australian coleoptera, with descriptions of new genera and species. *Trans. R. Soc. S. Aust.* **13**, 121-160.
- CARTER, H. J. (1916) Revision of the genus *Stigmodera*, and descriptions of some new species of Buprestidae (Order Coleoptera). *Trans. R. Soc. S. Aust.* **40**, 78-144.
- (1929) A check list of the Australian Buprestidae. *Aust. Zool.* **5**, 265-304.
- (1930) New Guinea and Australian coleoptera. Notes and new species. *Proc. Linn. Soc. N.S.W.* **55**, 532-549.
- (1931) Notes on the genus *Stigmodera* (Family Buprestidae). Together with descriptions of New Species of an a Retabulation of the Subgenus *Castiarina*. *Aust. Zool.* **6**, 337-367.
- (1940) XXXIX. Australian Buprestidae and the Junk catalogue. *Ann. Mag. Nat. Hist. Ser.* **11**, No. 6, 380-389.
- DEUQUET, C. M. (1956) Notes on Australian Buprestidae, with descriptions of three new species and two subspecies of the genus *Stigmodera*, subgenus *Castiarina*. *Proc. Linn. Soc. N.S.W.* **81**, 153-156.
- WATT, J. C. (1979) Abbreviations for Entomological collections. *N.Z. Zool.* **6**, 519-520.